

Product datasheet for **TA329423**

NKX2.8 (NKX2-8) Rabbit Polyclonal Antibody

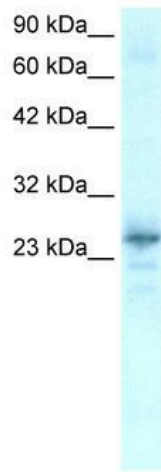
Product data:

Product Type:	Primary Antibodies
Applications:	WB
Recommended Dilution:	WB
Reactivity:	Human, Mouse
Host:	Rabbit
Isotype:	IgG
Clonality:	Polyclonal
Immunogen:	The immunogen for anti-NKX2-8 antibody: synthetic peptide directed towards the C terminal of human NKX2-8. Synthetic peptide located within the following region: GTAAAEKCGAPPAAACPLPGYPAFGPGSALGLFPAYQHLASPALVSWNW
Formulation:	Liquid. Purified antibody supplied in 1x PBS buffer with 0.09% (w/v) sodium azide and 2% sucrose. <i>Note that this product is shipped as lyophilized powder to China customers.</i>
Conjugation:	Unconjugated
Storage:	Store at -20°C as received.
Stability:	Stable for 12 months from date of receipt.
Predicted Protein Size:	26 kDa
Gene Name:	NK2 homeobox 8
Database Link:	NP_055175 Entrez Gene 26257 Human O15522
Background:	A murine NKX2-8 was isolated from the Hepal-6 cell line and showed oligonucleotide binding competitive with fetoprotein transcription factor. Nkx2.8 bound to the active AFP promoter, and antisense inhibition of Nkx2.8 mRNA translation selectively reduced expression of both the endogenous human AFP gene and transfected reporters containing the rat AFP promoter.
Synonyms:	Nkx2-9; NKX2.8; NKX2H
Note:	Immunogen sequence homology: Dog: 100%; Rat: 100%; Human: 100%; Mouse: 100%; Rabbit: 100%; Pig: 92%; Bovine: 92%

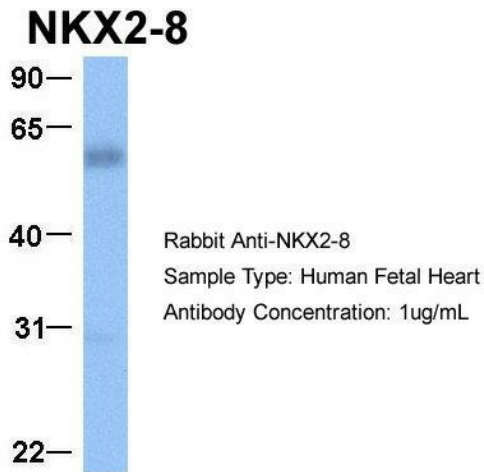


[View online »](#)

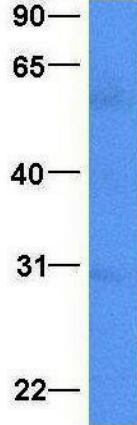
Protein Families: Druggable Genome, Transcription Factors

Product images:

WB Suggested Anti-NKX2-8 Antibody Titration:
0.2-1 ug/ml; ELISA Titer: 1:62500; Positive Control:
Human heart

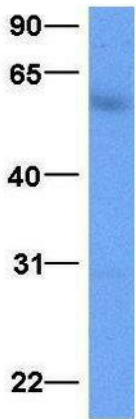


Host: Rabbit; Target Name: NKX2-8; Sample
Tissue: Human Fetal Heart; Antibody Dilution:
1.0ug/ml

NKX2-8

Rabbit Anti-NKX2-8
Sample Type: Human Fetal Liver
Antibody Concentration: 1ug/mL

Host: Rabbit; Target Name: NKX2-8; Sample
Tissue: Human Fetal Liver; Antibody Dilution:
1.0ug/ml

NKX2-8

Rabbit Anti-NKX2-8
Sample Type: Human Fetal Lung
Antibody Concentration: 1ug/mL

Host: Rabbit; Target Name: NKX2-8; Sample
Tissue: Human Fetal Lung; Antibody Dilution:
1.0ug/ml

NKX2-8

Rabbit Anti-NKX2-8
Sample Type: Human Adult
Placenta
Antibody Concentration: 1ug/mL

Host: Rabbit; Target Name: NKX2-8; Sample
Tissue: Human Adult Placenta; Antibody Dilution:
1.0ug/ml