

Product datasheet for **TA329422**

GATA2 Rabbit Polyclonal Antibody

Product data:

Product Type:	Primary Antibodies
Applications:	IHC, WB
Recommended Dilution:	WB, IHC
Reactivity:	Human, Mouse
Host:	Rabbit
Isotype:	IgG
Clonality:	Polyclonal
Immunogen:	The immunogen for anti-GATA2 antibody: synthetic peptide directed towards the N terminal of human GATA2. Synthetic peptide located within the following region: PYYANPAHARARVSYSPA HARLTGGQMCRPHLLHSPGLPWLDGGKAALSA
Formulation:	Liquid. Purified antibody supplied in 1x PBS buffer with 0.09% (w/v) sodium azide and 2% sucrose. <i>Note that this product is shipped as lyophilized powder to China customers.</i>
Conjugation:	Unconjugated
Storage:	Store at -20°C as received.
Stability:	Stable for 12 months from date of receipt.
Predicted Protein Size:	50 kDa
Gene Name:	GATA binding protein 2
Database Link:	NP_116027 Entrez Gene 14461 Mouse Entrez Gene 2624 Human P23769
Background:	The GATA family of transcription factors, which contain zinc fingers in their DNA binding domain, have emerged as candidate regulators of gene expression in hematopoietic cells is essential for normal primitive and definitive erythropoiesis and is expressed at high levels in erythroid cells, mast cells, and megakaryocytes. GATA2 is expressed in hematopoietic progenitors, including early erythroid cells, mast cells, and megakaryocytes, and also in nonhematopoietic embryonic stem cells.
Synonyms:	DCML; IMD21; MONOMAC; NFE1B

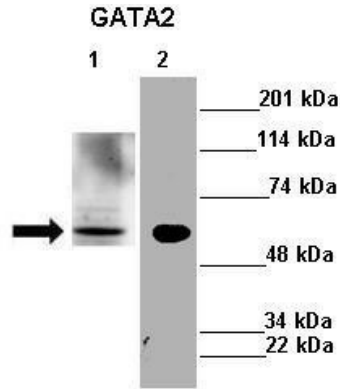


[View online »](#)

Note: Immunogen sequence homology: Dog: 100%; Pig: 100%; Rat: 100%; Horse: 100%; Human: 100%; Mouse: 100%; Bovine: 100%; Rabbit: 100%; Guinea pig: 100%

Protein Families: Adult stem cells, Druggable Genome, ES Cell Differentiation/IPS, Transcription Factors

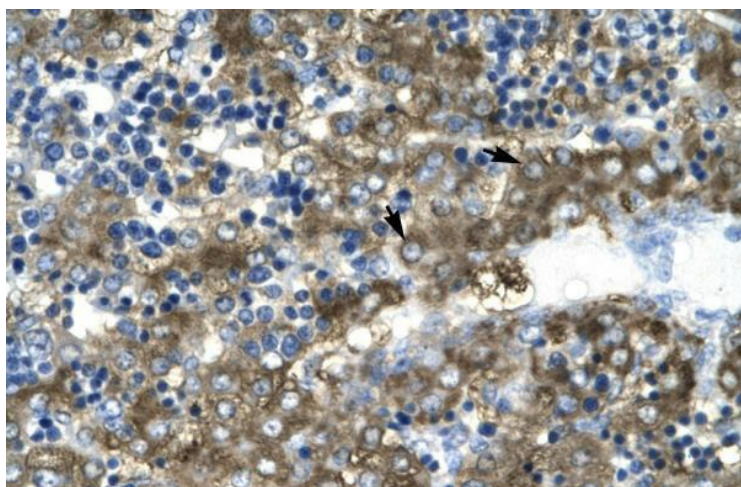
Product images:



Lanes : Lane 1: 30ug mouse liver lysate Lane 2: 30 ug mouse N2a cell lysate; Primary Antibody Dilution : 1:500; Secondary Antibody : Anti-rabbit-HRP; Secondary Antibody Dilution : 1:2500; Gene Name : GATA2; Submitted by : A Kalyani and Vinayak Gupta IIT Madras



WB Suggested Anti-GATA2 Antibody Titration: 1.0-2.0 ug/ml; ELISA Titer: 1:1562500; Positive Control: K562 cell lysate GATA2 is strongly supported by BioGPS gene expression data to be expressed in Human K562 cells



Human Liver