

## Product datasheet for **TA329420**

### ZNF385 (ZNF385A) Rabbit Polyclonal Antibody

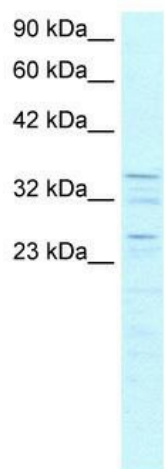
#### Product data:

Product Type:	Primary Antibodies
Applications:	IHC, WB
Recommended Dilution:	WB, IHC
Reactivity:	Human
Host:	Rabbit
Isotype:	IgG
Clonality:	Polyclonal
Immunogen:	The immunogen for anti-ZNF385 antibody: synthetic peptide directed towards the C terminal of human ZNF385. Synthetic peptide located within the following region: LKQHSSRRHRDGVAGKPNLLSRHKSRGAGELAGTLTFSKELPKSLAG
Formulation:	Liquid. Purified antibody supplied in 1x PBS buffer with 0.09% (w/v) sodium azide and 2% sucrose. <i>Note that this product is shipped as lyophilized powder to China customers.</i>
Conjugation:	Unconjugated
Storage:	Store at -20°C as received.
Stability:	Stable for 12 months from date of receipt.
Predicted Protein Size:	38 kDa
Gene Name:	zinc finger protein 385A
Database Link:	<a href="#">NP_056296</a> <a href="#">Entrez Gene 25946 Human</a> <a href="#">Q96PM9</a>
Background:	Results suggest that RZF is a shuttling regulatory protein expressed in photoreceptors of the human retina that may be involved in mRNA or protein regulation of photoreceptor-specific genes and therefore have role in retinal disease mechanisms.
Synonyms:	HZF; RZF; ZFP385; ZNF385
Note:	Immunogen sequence homology: Dog: 100%; Pig: 100%; Rat: 100%; Horse: 100%; Human: 100%; Mouse: 100%; Bovine: 100%; Rabbit: 100%; Zebrafish: 100%; Guinea pig: 100%
Protein Families:	Transcription Factors

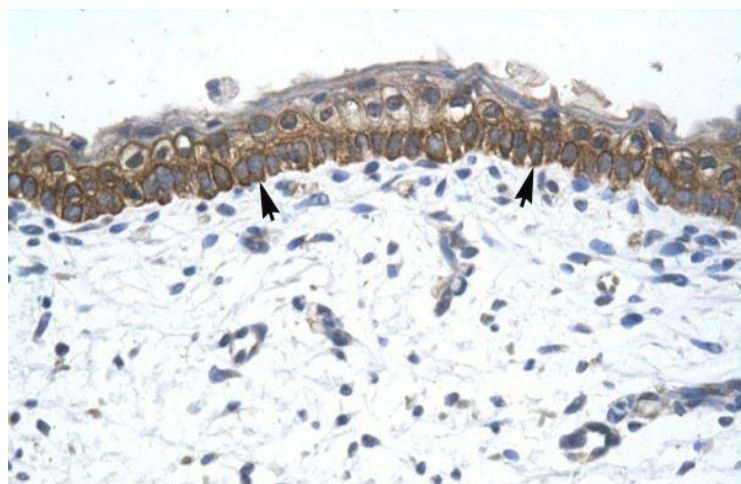


[View online »](#)

Product images:



WB Suggested Anti-ZNF385 Antibody Titration:  
 0.2-1 ug/ml; ELISA Titer: 1:312500; Positive  
 Control: K562 cell lysate



Human Skin