

## Product datasheet for **TA329418**

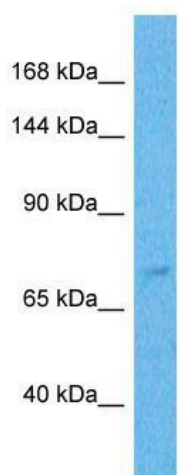
### ZNF471 Rabbit Polyclonal Antibody

#### Product data:

Product Type:	Primary Antibodies
Applications:	WB
Recommended Dilution:	WB
Reactivity:	Human
Host:	Rabbit
Clonality:	Polyclonal
Immunogen:	The immunogen for Anti-ZNF471 antibody is: synthetic peptide directed towards the C-terminal region of Human ZNF471. Synthetic peptide located within the following region: KPYECNECGKAFSQTSNLTQHQRHTGKPYKCTECGKAFSDSSCAQHQ
Formulation:	Liquid. Purified antibody supplied in 1x PBS buffer with 0.09% (w/v) sodium azide and 2% sucrose. <i>Note that this product is shipped as lyophilized powder to China customers.</i>
Conjugation:	Unconjugated
Storage:	Store at -20°C as received.
Stability:	Stable for 12 months from date of receipt.
Predicted Protein Size:	68 kDa
Gene Name:	zinc finger protein 471
Database Link:	<a href="#">NP_065864</a> <a href="#">Entrez Gene 57573 Human</a> <a href="#">Q9BX82</a>
Background:	ZNF471 may be involved in transcriptional regulation.
Synonyms:	ERP1; Z1971
Note:	Immunogen sequence homology: Dog: 100%; Rat: 100%; Human: 100%; Bovine: 100%; Pig: 92%; Horse: 92%; Rabbit: 92%; Guinea pig: 92%; Mouse: 85%
Protein Families:	Transcription Factors



[View online »](#)

**Product images:**

Host: Rabbit; Target Name: ZNF471; Sample  
Tissue: Thyroid Tumor lysates; Antibody Dilution:  
1.0ug/ml