

Product datasheet for **TA329417**

SPDEF Rabbit Polyclonal Antibody

Product data:

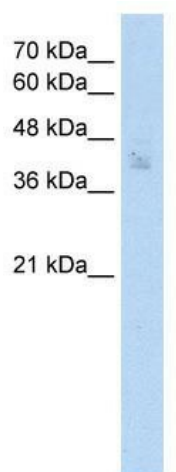
Product Type:	Primary Antibodies
Applications:	WB
Recommended Dilution:	WB
Reactivity:	Human
Host:	Rabbit
Isotype:	IgG
Clonality:	Polyclonal
Immunogen:	The immunogen for anti-SPDEF antibody: synthetic peptide directed towards the N terminal of human SPDEF. Synthetic peptide located within the following region: AAAGAVGLERRDWSPPATPEQGLSAFYLSYFDMLYPEDSSWAAKAPGA
Formulation:	Liquid. Purified antibody supplied in 1x PBS buffer with 0.09% (w/v) sodium azide and 2% sucrose. <i>Note that this product is shipped as lyophilized powder to China customers.</i>
Conjugation:	Unconjugated
Storage:	Store at -20°C as received.
Stability:	Stable for 12 months from date of receipt.
Predicted Protein Size:	38 kDa
Gene Name:	SAM pointed domain containing ETS transcription factor
Database Link:	NP_036523 Entrez Gene 25803 Human O95238
Background:	PDEF is an ETS transcription factor expressed in prostate epithelial cells. It acts as an androgen-independent transactivator of PSA expression. PDEF is an ETS transcription factor expressed in prostate epithelial cells. It acts as an androgen-independent transactivator of PSA (MIM 176820) expression. [supplied by OMIM]
Synonyms:	bA375E1.3; PDEF
Note:	Immunogen sequence homology: Pig: 100%; Rat: 100%; Horse: 100%; Human: 100%; Mouse: 100%; Rabbit: 100%; Dog: 93%; Bovine: 86%; Guinea pig: 83%



[View online »](#)

Protein Families: Transcription Factors

Product images:



WB Suggested Anti-SPDEF Antibody Titration: 2.5ug/ml; ELISA Titer: 1:12500; Positive Control: MCF7 cell lysate. SPDEF is strongly supported by BioGPS gene expression data to be expressed in Human MCF7 cells