

Product datasheet for **TA329413**

ZNF620 Rabbit Polyclonal Antibody

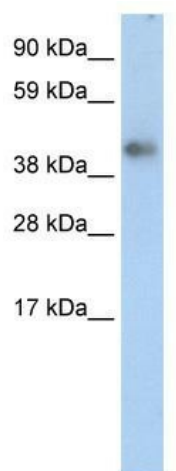
Product data:

Product Type:	Primary Antibodies
Applications:	WB
Recommended Dilution:	WB
Reactivity:	Human
Host:	Rabbit
Isotype:	IgG
Clonality:	Polyclonal
Immunogen:	The immunogen for anti-ZNF620 antibody: synthetic peptide directed towards the middle region of human ZNF620. Synthetic peptide located within the following region: TVHQRMHTEGKPYECKEKGKRLSSNTALTQHQRHTEGKPFECKEKGKAF
Formulation:	Liquid. Purified antibody supplied in 1x PBS buffer with 0.09% (w/v) sodium azide and 2% sucrose. <i>Note that this product is shipped as lyophilized powder to China customers.</i>
Conjugation:	Unconjugated
Storage:	Store at -20°C as received.
Stability:	Stable for 12 months from date of receipt.
Predicted Protein Size:	49 kDa
Gene Name:	zinc finger protein 620
Database Link:	NP_787084 Entrez Gene 253639 Human Q6ZNG0
Background:	ZNF620 is a new candidate transcription factor
Synonyms:	MGC50836
Note:	Immunogen sequence homology: Dog: 100%; Pig: 100%; Horse: 100%; Human: 100%; Bovine: 100%; Rabbit: 100%



[View online »](#)

Product images:



WB Suggested Anti-ZNF620 Antibody Titration:
2.5 ug/ml; ELISA Titer: 1:1562500; Positive
Control: Human Thymus