

## Product datasheet for **TA329410**

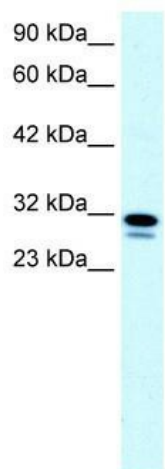
### SSBP2 Rabbit Polyclonal Antibody

#### Product data:

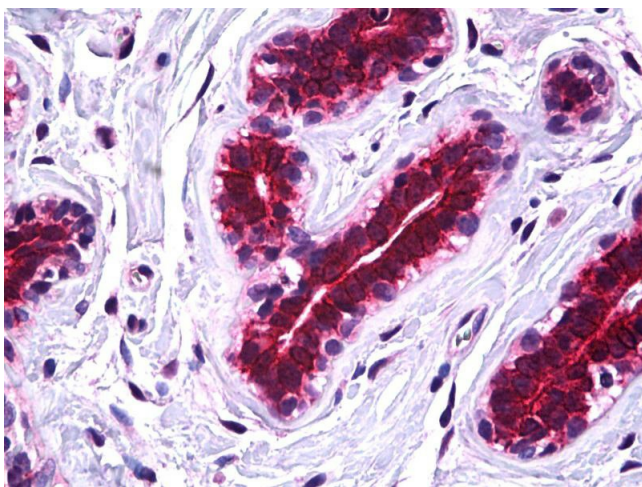
Product Type:	Primary Antibodies
Applications:	IHC, WB
Recommended Dilution:	WB, IHC
Reactivity:	Human
Host:	Rabbit
Isotype:	IgG
Clonality:	Polyclonal
Immunogen:	The immunogen for anti-SSBP2 antibody: synthetic peptide directed towards the N terminal of human SSBP2. Synthetic peptide located within the following region: YPGGPRPPLRIPNQUALGGVPGSQPLLPSGMDPTRQQGHPNMGGPMQRMTF
Formulation:	Liquid. Purified antibody supplied in 1x PBS buffer with 0.09% (w/v) sodium azide and 2% sucrose. <i>Note that this product is shipped as lyophilized powder to China customers.</i>
Conjugation:	Unconjugated
Storage:	Store at -20°C as received.
Stability:	Stable for 12 months from date of receipt.
Predicted Protein Size:	38 kDa
Gene Name:	single stranded DNA binding protein 2
Database Link:	<a href="#">NP_036578</a> <a href="#">Entrez Gene 23635 Human</a> <a href="#">P81877</a>
Background:	SSBP2 is a member of a closely related, evolutionarily conserved, and ubiquitously expressed gene family. It is also a potential tumor suppressor.
Synonyms:	HSPC116; SOSS-B2
Note:	Immunogen sequence homology: Dog: 100%; Pig: 100%; Rat: 100%; Horse: 100%; Human: 100%; Mouse: 100%; Bovine: 100%; Rabbit: 100%; Guinea pig: 100%; Zebrafish: 92%
Protein Families:	Transcription Factors



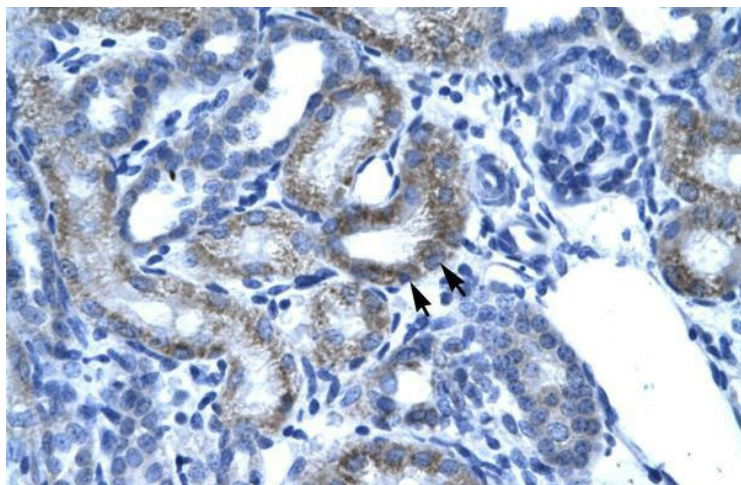
[View online »](#)

**Product images:**

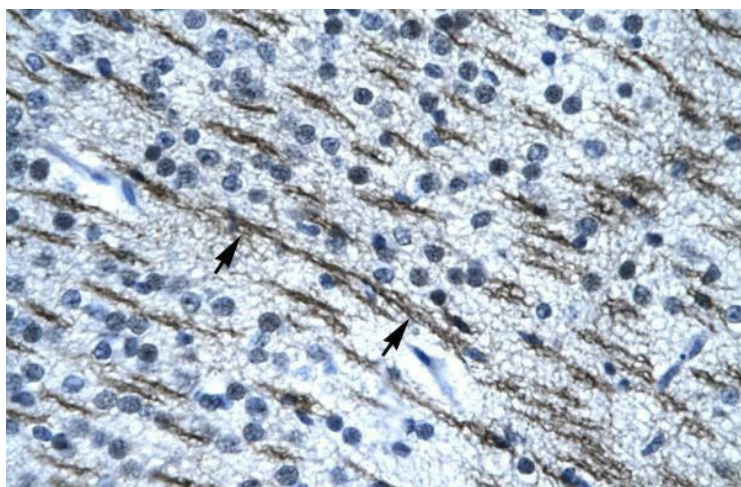
WB Suggested Anti-SSBP2 Antibody Titration: 0.2-1 ug/ml; ELISA Titer: 1:7812500; Positive Control: Raji cell lysate



IHC Information: Paraffin embedded breast tissue, tested with an antibody dilution of 5 ug/ml.



Rabbit Anti-SSBP2 Antibody; Paraffin Embedded Tissue: Human Kidney; Cellular Data: Epithelial cells of renal tubule; Antibody Concentration: 4.0-8.0 ug/ml; Magnification: 400X



Rabbit Anti-SSBP2 Antibody; Paraffin Embedded Tissue: Human Brain; Cellular Data: Nerve fibre; Antibody Concentration: 4.0-8.0 ug/ml; Magnification: 400X