

Product datasheet for **TA329409**

SEC14 like protein 2 (SEC14L2) Rabbit Polyclonal Antibody

Product data:

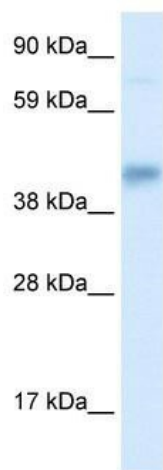
Product Type:	Primary Antibodies
Applications:	WB
Recommended Dilution:	WB
Reactivity:	Human
Host:	Rabbit
Isotype:	IgG
Clonality:	Polyclonal
Immunogen:	The immunogen for anti-SEC14L2 antibody: synthetic peptide directed towards the middle region of human SEC14L2. Synthetic peptide located within the following region: MTDPDGNPKCKSKINYGGDIPRKYVVRDQVKQQYEHSVQISRGSSHQVEY
Formulation:	Liquid. Purified antibody supplied in 1x PBS buffer with 0.09% (w/v) sodium azide and 2% sucrose. <i>Note that this product is shipped as lyophilized powder to China customers.</i>
Conjugation:	Unconjugated
Storage:	Store at -20°C as received.
Stability:	Stable for 12 months from date of receipt.
Predicted Protein Size:	46 kDa
Gene Name:	SEC14 like lipid binding 2
Database Link:	NP_036561 Entrez Gene 23541 Human O76054
Background:	SEC14L2 encodes a cytosolic protein which belongs to a family of lipid-binding proteins including Sec14p, alpha-tocopherol transfer protein, and cellular retinol-binding protein. The encoded protein stimulates squalene monooxygenase which is a downstream enzyme in the cholesterol biosynthetic pathway.
Synonyms:	C22orf6; SPF; TAP; TAP1
Note:	Immunogen sequence homology: Human: 100%; Dog: 93%; Pig: 93%; Rat: 93%; Horse: 93%; Bovine: 93%; Guinea pig: 93%; Mouse: 87%; Rabbit: 87%



[View online »](#)

Protein Families: Transcription Factors

Product images:



WB Suggested Anti-SEC14L2 Antibody Titration:
0.2-1 ug/ml; ELISA Titer: 1:7812500; Positive
Control: Human Liver