

Product datasheet for **TA329408**

ZC3H7B Rabbit Polyclonal Antibody

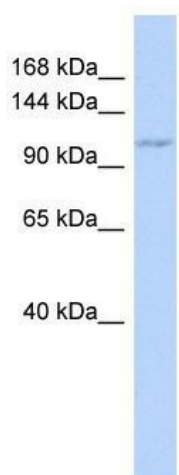
Product data:

Product Type:	Primary Antibodies
Applications:	WB
Recommended Dilution:	WB
Reactivity:	Human
Host:	Rabbit
Isotype:	IgG
Clonality:	Polyclonal
Immunogen:	The immunogen for anti-ZC3H7B antibody: synthetic peptide directed towards the middle region of human ZC3H7B. Synthetic peptide located within the following region: KPAPSPEPCMPNTALLIKNPLAATHEFKQACQLCYPKTGPRAGDYTYREG
Formulation:	Liquid. Purified antibody supplied in 1x PBS buffer with 0.09% (w/v) sodium azide and 2% sucrose.
Conjugation:	Unconjugated
Storage:	Store at -20°C as received.
Stability:	Stable for 12 months from date of receipt.
Predicted Protein Size:	110 kDa
Gene Name:	zinc finger CCCH-type containing 7B
Database Link:	NP_060060 Entrez Gene 23264 Human Q9UGR2
Background:	ZC3H7B is a protein that contains a tetratricopeptide repeat domain. The encoded protein also interacts with the rotavirus non-structural protein NSP3. This gene encodes a protein that contains a tetratricopeptide repeat domain. The encoded protein also interacts with the rotavirus non-structural protein NSP3.
Synonyms:	RoXaN
Note:	Immunogen sequence homology: Dog: 100%; Pig: 100%; Rat: 100%; Horse: 100%; Human: 100%; Mouse: 100%; Bovine: 100%; Guinea pig: 100%; Rabbit: 92%



[View online »](#)

Product images:



WB Suggested Anti-ZC3H7B Antibody Titration: 0.2-1 ug/ml; ELISA Titer: 1:312500; Positive Control: 721_B cell lysate. There is BioGPS gene expression data showing that ZC3H7B is expressed in 721_B.