

## Product datasheet for **TA329407**

### JMJD6 Rabbit Polyclonal Antibody

#### Product data:

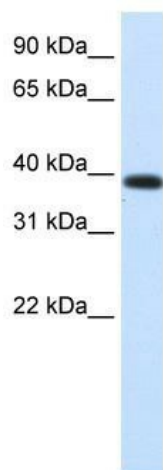
Product Type:	Primary Antibodies
Applications:	IHC, WB
Recommended Dilution:	WB, IHC
Reactivity:	Human
Host:	Rabbit
Isotype:	IgG
Clonality:	Polyclonal
Immunogen:	The immunogen for anti-PTDSR antibody: synthetic peptide directed towards the middle region of human PTDSR. Synthetic peptide located within the following region: PRELIKVTRDEGGNQDEAITWFNVIYPRTQLPTWPPEFKPLEILQKPGE
Formulation:	Liquid. Purified antibody supplied in 1x PBS buffer with 0.09% (w/v) sodium azide and 2% sucrose. <i>Note that this product is shipped as lyophilized powder to China customers.</i>
Conjugation:	Unconjugated
Storage:	Store at -20°C as received.
Stability:	Stable for 12 months from date of receipt.
Predicted Protein Size:	43 kDa
Gene Name:	arginine demethylase and lysine hydroxylase
Database Link:	<a href="#">NP_055982</a> <a href="#">Entrez Gene 23210 Human</a> <a href="#">Q6NYC1</a>
Background:	PTDSR is required during embryogenesis and differentiation of multiple organs during embryogenesis. PTDSR probably acts as a key regulator of hematopoietic differentiation. PTDSR may not be required for apoptotic cell clearance by macrophages but seems to be necessary for the regulation of macrophage cytokine responses
Synonyms:	PSR; PTDSR; PTDSR1
Note:	Immunogen sequence homology: Human: 100%; Zebrafish: 100%; Dog: 93%; Pig: 93%; Rat: 93%; Horse: 93%; Mouse: 93%; Bovine: 93%; Rabbit: 93%; Guinea pig: 93%



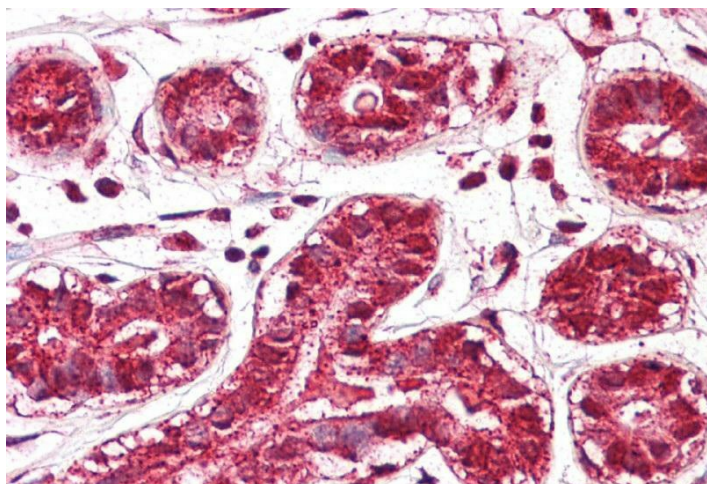
[View online »](#)

Protein Families: Druggable Genome, ES Cell Differentiation/IPS

### Product images:



WB Suggested Anti-PTDSR Antibody Titration: 0.2-1 ug/ml; ELISA Titer: 1:1562500; Positive Control: Human kidney



IHC Suggested Anti-PTDSR antibody; Titration: 5ug/ ml; Positive Control: Breast