

Product datasheet for **TA329401**

TOLLIP Rabbit Polyclonal Antibody

Product data:

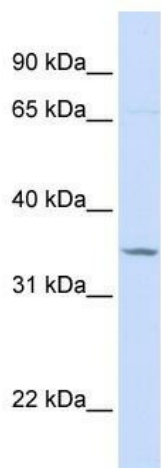
Product Type:	Primary Antibodies
Applications:	WB
Recommended Dilution:	WB
Reactivity:	Human
Host:	Rabbit
Isotype:	IgG
Clonality:	Polyclonal
Immunogen:	The immunogen for anti-TOLLIP antibody: synthetic peptide directed towards the C terminal of human TOLLIP. Synthetic peptide located within the following region: MATTVSTQRGPVYIGELPQDFLRITPTQQQRQVQLDAQAAQQLQYGGAVG
Formulation:	Liquid. Purified antibody supplied in 1x PBS buffer with 0.09% (w/v) sodium azide and 2% sucrose. <i>Note that this product is shipped as lyophilized powder to China customers.</i>
Conjugation:	Unconjugated
Storage:	Store at -20°C as received.
Stability:	Stable for 12 months from date of receipt.
Predicted Protein Size:	30 kDa
Gene Name:	toll interacting protein
Database Link:	NP_061882 Entrez Gene 54472 Human Q9H0E2
Background:	TOLLIP is component of the signaling pathway of IL-1 and Toll-like receptors. It Inhibits cell activation by microbial products. It also recruits IRAK1 to the IL-1 receptor complex and inhibits IRAK1 phosphorylation and kinase activity.
Synonyms:	IL-1RAcPIP
Note:	Immunogen sequence homology: Pig: 100%; Rat: 100%; Horse: 100%; Human: 100%; Mouse: 100%; Zebrafish: 100%; Guinea pig: 100%; Bovine: 85%; Rabbit: 83%; Yeast: 79%
Protein Families:	Druggable Genome



[View online »](#)

Protein Pathways: Toll-like receptor signaling pathway

Product images:



WB Suggested Anti-TOLLIP Antibody Titration:
0.2-1 ug/ml; ELISA Titer: 1:62500; Positive Control:
Hela cell lysate