

## Product datasheet for **TA329400**

### TLR6 Rabbit Polyclonal Antibody

#### Product data:

Product Type:	Primary Antibodies
Applications:	IHC, WB
Recommended Dilution:	WB, IHC
Reactivity:	Human
Host:	Rabbit
Isotype:	IgG
Clonality:	Polyclonal
Immunogen:	The immunogen for anti-TLR6 antibody: synthetic peptide directed towards the middle region of human TLR6. Synthetic peptide located within the following region: KCLVRVFQFLWPKPVEYLNINLTIIIESIREEDFTYSKTTLKALTIEHIT
Formulation:	Liquid. Purified antibody supplied in 1x PBS buffer with 0.09% (w/v) sodium azide and 2% sucrose. <i>Note that this product is shipped as lyophilized powder to China customers.</i>
Conjugation:	Unconjugated
Storage:	Store at -20°C as received.
Stability:	Stable for 12 months from date of receipt.
Predicted Protein Size:	53 kDa
Gene Name:	toll like receptor 6
Database Link:	<a href="#">NP_006059</a> <a href="#">Entrez Gene 10333 Human</a> <a href="#">Q9Y2C9</a>
Background:	TLR6 is a member of the Toll-like receptor (TLR) family which plays a fundamental role in pathogen recognition and activation of innate immunity. TLRs are highly conserved from <i>Drosophila</i> to humans and share structural and functional similarities. They recognize pathogen-associated molecular patterns (PAMPs) that are expressed on infectious agents, and mediate the production of cytokines necessary for the development of effective immunity. The various TLRs exhibit different patterns of expression. This receptor functionally interacts with toll-like receptor 2 to mediate cellular response to bacterial lipoproteins.



[View online »](#)

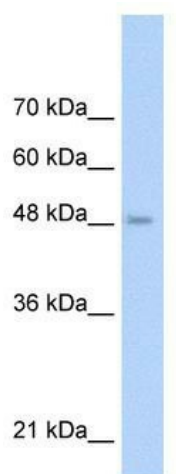
Synonyms: CD286

Note: Immunogen sequence homology: Human: 100%; Sheep: 86%; Goat: 85%

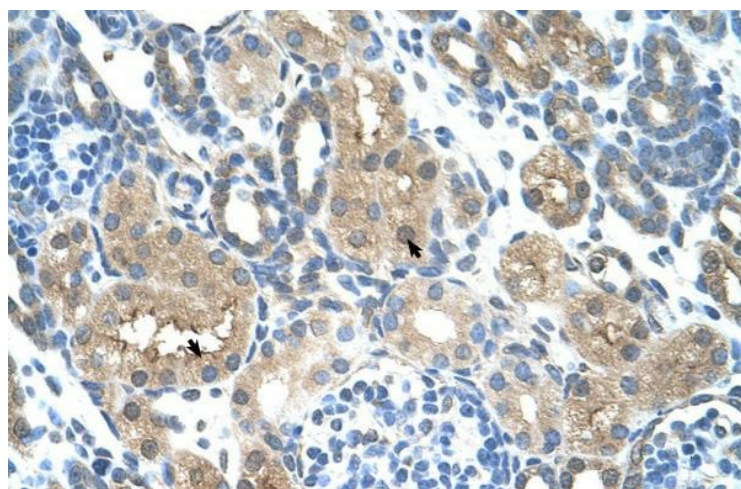
Protein Families: Druggable Genome, Transmembrane

Protein Pathways: Toll-like receptor signaling pathway

### Product images:



WB Suggested Anti-TLR6 Antibody Titration: 0.2-1 ug/ml; ELISA Titer: 1:12500; Positive Control: Jurkat cell lysate



Human kidney