

Product datasheet for **TA329393**

FOXC2 Rabbit Polyclonal Antibody

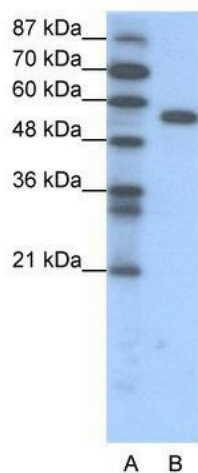
Product data:

Product Type:	Primary Antibodies
Applications:	WB
Recommended Dilution:	WB
Reactivity:	Human
Host:	Rabbit
Isotype:	IgG
Clonality:	Polyclonal
Immunogen:	The immunogen for anti-FOXC2 antibody: synthetic peptide directed towards the C terminal of human FOXC2. Synthetic peptide located within the following region: PQPGAAAQAASWYLNHSGDLNHLPGHTFAAQQTFPNVREMFNSHRLGI
Formulation:	Liquid. Purified antibody supplied in 1x PBS buffer with 0.09% (w/v) sodium azide and 2% sucrose. <i>Note that this product is shipped as lyophilized powder to China customers.</i>
Conjugation:	Unconjugated
Storage:	Store at -20°C as received.
Stability:	Stable for 12 months from date of receipt.
Predicted Protein Size:	54 kDa
Gene Name:	forkhead box C2
Database Link:	NP_005242 Entrez Gene 2303 Human Q99958
Background:	FOXC2 belongs to the forkhead family of transcription factors which is characterized by a distinct DNA-binding forkhead domain. The specific function of this gene has not yet been determined; however, it may play a role in the development of mesenchymal tissues.
Synonyms:	FKHL14; LD; MFH-1; MFH1
Note:	Immunogen sequence homology: Dog: 100%; Horse: 100%; Human: 100%; Rat: 92%; Mouse: 92%; Bovine: 92%; Pig: 85%; Guinea pig: 85%
Protein Families:	Druggable Genome, Transcription Factors



[View online »](#)

Product images:



WB Suggested Anti-FOXC2 Antibody Titration:
1.25ug/ml; ELISA Titer: 1:1562500; Positive
Control: Jurkat cell lysate