

Product datasheet for **TA329391**

FOXL1 Rabbit Polyclonal Antibody

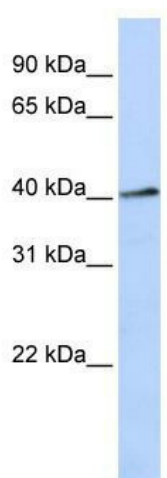
Product data:

Product Type:	Primary Antibodies
Applications:	WB
Recommended Dilution:	WB
Reactivity:	Human
Host:	Rabbit
Isotype:	IgG
Clonality:	Polyclonal
Immunogen:	The immunogen for anti-FOXL1 antibody: synthetic peptide directed towards the N terminal of human FOXL1. Synthetic peptide located within the following region: SHLFDPRLPALAAASPMLYLYGPERPGLPLAFAPAAALAASGRAETPQKPP
Formulation:	Liquid. Purified antibody supplied in 1x PBS buffer with 0.09% (w/v) sodium azide and 2% sucrose. <i>Note that this product is shipped as lyophilized powder to China customers.</i>
Conjugation:	Unconjugated
Storage:	Store at -20°C as received.
Stability:	Stable for 12 months from date of receipt.
Predicted Protein Size:	36 kDa
Gene Name:	forkhead box L1
Database Link:	NP_005241 Entrez Gene 2300 Human Q12952
Background:	The exact function of FOXL1 remains unknown.
Synonyms:	FKH6; FKHL11; FREAC7
Note:	Immunogen sequence homology: Pig: 100%; Horse: 100%; Human: 100%; Rabbit: 100%; Dog: 92%; Bovine: 85%
Protein Families:	Transcription Factors



[View online »](#)

Product images:



WB Suggested Anti-FOXL1 Antibody Titration: 0.2-1 ug/ml; ELISA Titer: 1:12500; Positive Control: Jurkat cell lysate