

## Product datasheet for **TA329390**

### **FBXL11 (KDM2A) Rabbit Polyclonal Antibody**

#### **Product data:**

<b>Product Type:</b>	Primary Antibodies
<b>Applications:</b>	IHC, WB
<b>Recommended Dilution:</b>	WB, IHC
<b>Reactivity:</b>	Human
<b>Host:</b>	Rabbit
<b>Isotype:</b>	IgG
<b>Clonality:</b>	Polyclonal
<b>Immunogen:</b>	The immunogen for anti-FBXL11 antibody: synthetic peptide directed towards the N terminal of human FBXL11. Synthetic peptide located within the following region: RIRYSQRLRGTMRRRYEDDGISDDEIEGKRTFDLEEKLHTNKYNANFVTF
<b>Formulation:</b>	Liquid. Purified antibody supplied in 1x PBS buffer with 0.09% (w/v) sodium azide and 2% sucrose. <i>Note that this product is shipped as lyophilized powder to China customers.</i>
<b>Conjugation:</b>	Unconjugated
<b>Storage:</b>	Store at -20°C as received.
<b>Stability:</b>	Stable for 12 months from date of receipt.
<b>Predicted Protein Size:</b>	86 kDa
<b>Gene Name:</b>	lysine demethylase 2A
<b>Database Link:</b>	<a href="#">NP_001243334</a> <a href="#">Entrez Gene 22992 Human</a> <a href="#">Q9Y2K7</a>
<b>Background:</b>	FBXL11 is a member of the F-box protein family which is characterized by an approximately 40 amino acid motif, the F-box. The F-box proteins constitute one of the four subunits of ubiquitin protein ligase complex called SCFs (SKP1-cullin-F-box). The F-box proteins are divided into 3 classes: Fbws containing WD-40 domains, Fbls containing leucine-rich repeats, and Fbxs containing either different protein-protein interaction modules or no recognizable motifs. FBXL11 belongs to the Fbls class and, in addition to an F-box, contains at least 6 highly degenerated leucine-rich repeats



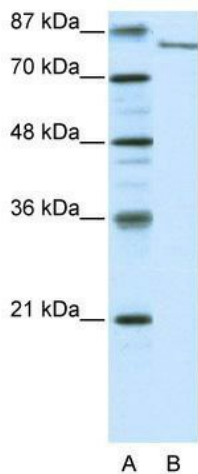
[View online »](#)

**Synonyms:** CXXC8; FBL7; FBL11; FBXL11; JHDM1A; LILINA

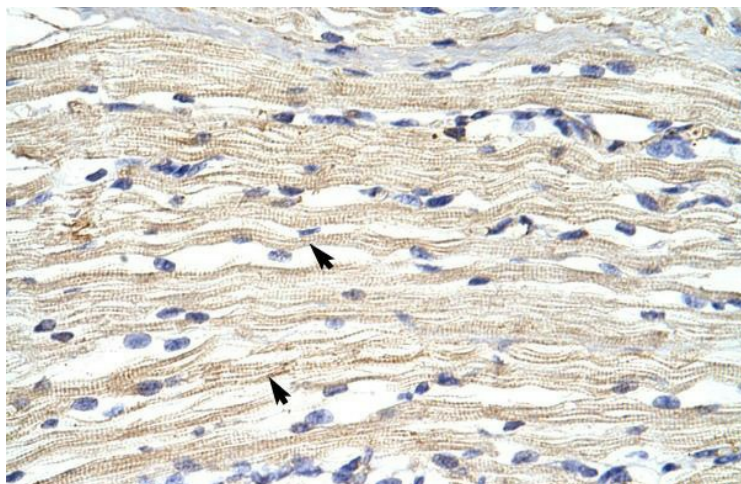
**Note:** Immunogen sequence homology: Dog: 100%; Pig: 100%; Rat: 100%; Horse: 100%; Human: 100%; Mouse: 100%; Bovine: 100%; Rabbit: 100%; Guinea pig: 100%; Zebrafish: 93%

**Protein Families:** Druggable Genome, Transcription Factors

**Product images:**



WB Suggested Anti-FBXL11 Antibody Titration:  
0.2-1 ug/ml; ELISA Titer: 1:62500; Positive Control:  
HepG2 cell lysate



HumanMuscle