

Product datasheet for **TA329389**

FOXF2 Rabbit Polyclonal Antibody

Product data:

Product Type:	Primary Antibodies
Applications:	IHC, WB
Recommended Dilution:	WB, IHC
Reactivity:	Human
Host:	Rabbit
Isotype:	IgG
Clonality:	Polyclonal
Immunogen:	The immunogen for anti-FOXF2 antibody: synthetic peptide directed towards the N terminal of human FOXF2. Synthetic peptide located within the following region: SSASCASSSSSSNSASAPSAACKSAGGGGAGAGSGGAKKASSGLRRPEKP
Formulation:	Liquid. Purified antibody supplied in 1x PBS buffer with 0.09% (w/v) sodium azide and 2% sucrose. <i>Note that this product is shipped as lyophilized powder to China customers.</i>
Conjugation:	Unconjugated
Storage:	Store at -20°C as received.
Stability:	Stable for 12 months from date of receipt.
Predicted Protein Size:	46 kDa
Gene Name:	forkhead box F2
Database Link:	NP_001443 Entrez Gene 2295 Human Q12947
Background:	FOXF2 encodes forkhead box F2, one of many human homologues of the Drosophila melanogaster transcription factor forkhead. FOXF2 is expressed in lung and placenta, and has been shown to transcriptionally activate several lung-specific genes.
Synonyms:	FKHL6; FREAC-2; FREAC2
Note:	Immunogen sequence homology: Human: 100%; Pig: 92%; Rabbit: 92%; Mouse: 85%

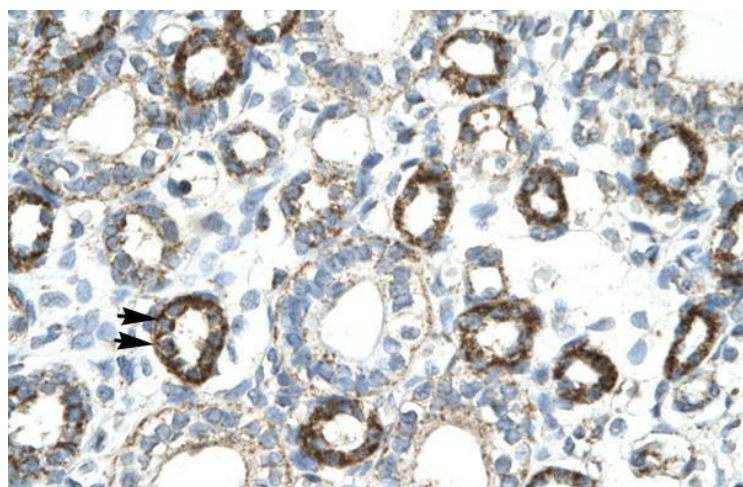


[View online »](#)

Product images:



WB Suggested Anti-FOXF2 Antibody Titration:
1.0ug/ml; ELISA Titer: 1:62500; Positive Control:
HepG2 cell lysate



Human kidney