

Product datasheet for **TA329385**

KIN Rabbit Polyclonal Antibody

Product data:

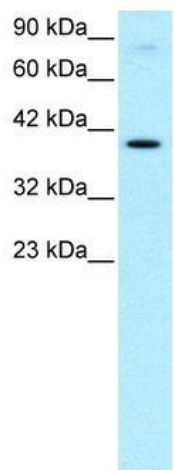
| | |
|-------------------------|-------------------------------------------------------------------------------------------------------------------------------------------------------------------------------------------------------------------------------------------------------------------------------------------------------------------------------------------------------------------------------------------------------------------------------------------------------------------------------------------------------------------|
| Product Type: | Primary Antibodies |
| Applications: | IHC, WB |
| Recommended Dilution: | WB, IHC |
| Reactivity: | Human |
| Host: | Rabbit |
| Isotype: | IgG |
| Clonality: | Polyclonal |
| Immunogen: | The immunogen for anti-KIN antibody: synthetic peptide directed towards the middle region of human KIN. Synthetic peptide located within the following region: LKTIGSSASVKRKESQSSSTQSKEKSKKSSALDEIMEIEEEKRTARTDY |
| Formulation: | Liquid. Purified antibody supplied in 1x PBS buffer with 0.09% (w/v) sodium azide and 2% sucrose. <i>Note that this product is shipped as lyophilized powder to China customers.</i> |
| Conjugation: | Unconjugated |
| Storage: | Store at -20°C as received. |
| Stability: | Stable for 12 months from date of receipt. |
| Predicted Protein Size: | 45 kDa |
| Gene Name: | Kin17 DNA and RNA binding protein |
| Database Link: | NP_036443 Entrez Gene 22944 Human O60870 |
| Background: | Kin is a nuclear protein that forms intranuclear foci during proliferation and is redistributed in the nucleoplasm during the cell cycle. Short-wave ultraviolet light provokes the relocalization of the protein, suggesting its participation in the cellular response to DNA damage. Originally selected based on protein-binding with RecA antibodies, the mouse protein presents a limited similarity with a functional domain of the bacterial RecA protein, a characteristic shared by the human ortholog. |
| Synonyms: | BTCD; KIN17; Rts2 |



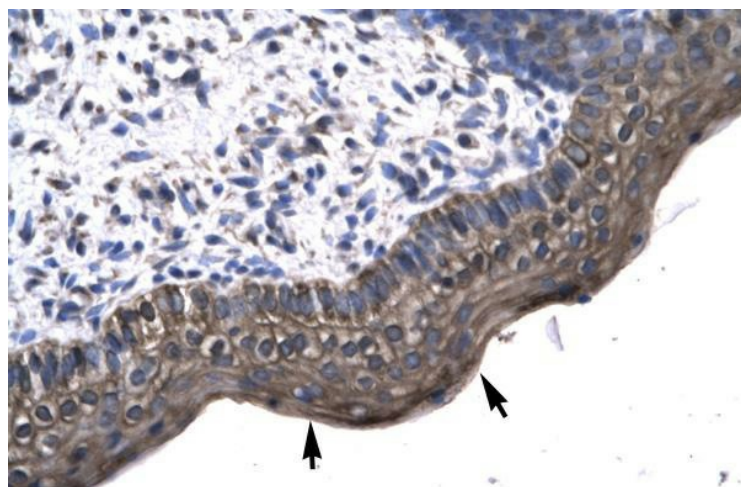
[View online »](#)

Note: Immunogen sequence homology: Horse: 100%; Human: 100%; Dog: 85%; Pig: 85%; Rat: 85%; Bovine: 85%; Rabbit: 85%; Guinea pig: 85%

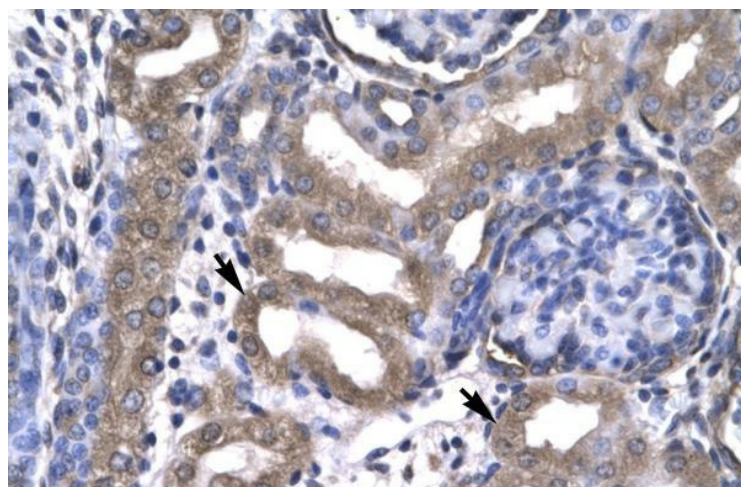
Product images:



WB Suggested Anti-KIN Antibody Titration: 0.2-1 ug/ml; ELISA Titer: 1:2500; Positive Control: HepG2 cell lysate. KIN is supported by BioGPS gene expression data to be expressed in HepG2



Human Spermatophore



Human kidney