

Product datasheet for **TA329381**

ZNF652 Rabbit Polyclonal Antibody

Product data:

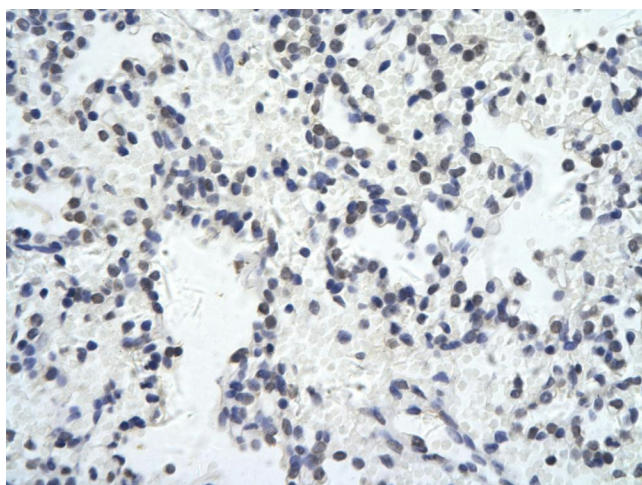
Product Type:	Primary Antibodies
Applications:	IHC, WB
Recommended Dilution:	WB
Reactivity:	Human
Host:	Rabbit
Isotype:	IgG
Clonality:	Polyclonal
Immunogen:	The immunogen for anti-ZNF652 antibody: synthetic peptide directed towards the N terminal of human ZNF652. Synthetic peptide located within the following region: RENSDDTEEEEEVSYPKREQIIVEVNLNNQTLNVSKGKGVSSQSKETPV
Formulation:	Liquid. Purified antibody supplied in 1x PBS buffer with 0.09% (w/v) sodium azide and 2% sucrose. <i>Note that this product is shipped as lyophilized powder to China customers.</i>
Conjugation:	Unconjugated
Storage:	Store at -20°C as received.
Stability:	Stable for 12 months from date of receipt.
Predicted Protein Size:	70 kDa
Gene Name:	zinc finger protein 652
Database Link:	NP_055712 Entrez Gene 22834 Human Q9Y2D9
Background:	ZNF652 is a new candidate transcription factor.
Synonyms:	DKFZp781E2122; KIAA0924
Note:	Immunogen sequence homology: Human: 100%; Dog: 93%; Rat: 93%; Mouse: 93%; Goat: 91%; Yeast: 91%; Rabbit: 90%; Bovine: 88%; Horse: 87%; Pig: 78%



[View online »](#)

Product images:

WB Suggested Anti-ZNF652 Antibody Titration: 0.2-1 ug/ml; ELISA Titer: 1:312500; Positive Control: HeLa cell lysate ZNF652 is supported by BioGPS gene expression data to be expressed in HeLa



Rabbit Anti-ZNF652 antibody; Paraffin Embedded Tissue: Human Lung cell; Cellular Data: Epithelial cells of renal tubule; Antibody Concentration: 4.0-8.0 ug/ml; Magnification: 400X