

Product datasheet for **TA329380**

ZNFN1A2 (IKZF2) Rabbit Polyclonal Antibody

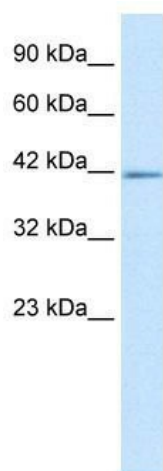
Product data:

Product Type:	Primary Antibodies
Applications:	IHC, WB
Recommended Dilution:	WB, IHC
Reactivity:	Human
Host:	Rabbit
Isotype:	IgG
Clonality:	Polyclonal
Immunogen:	The immunogen for anti-ZNFN1A2 antibody: synthetic peptide directed towards the C terminal of human ZNFN1A2. Synthetic peptide located within the following region: REASPSNSCLDSTDSESSHDDHQSYQGHPALNPKRKQSPAYMKEDVKALD
Formulation:	Liquid. Purified antibody supplied in 1x PBS buffer with 0.09% (w/v) sodium azide and 2% sucrose. <i>Note that this product is shipped as lyophilized powder to China customers.</i>
Conjugation:	Unconjugated
Storage:	Store at -20°C as received.
Stability:	Stable for 12 months from date of receipt.
Predicted Protein Size:	43 kDa
Gene Name:	IKAROS family zinc finger 2
Database Link:	NP_001072994 Entrez Gene 22807 Human Q9UKS7
Background:	Novel short isoforms of this gene, ZNFN1A2, are overexpressed in a patient with T-cell acute lymphoblastic leukemia and may contribute to the development of T-cell malignancies.
Synonyms:	ANF1A2; HELIOS; ZNF1A2; ZNFN1A2
Note:	Immunogen sequence homology: Human: 100%; Dog: 93%; Pig: 93%; Horse: 93%; Mouse: 93%; Bovine: 93%; Rabbit: 93%; Guinea pig: 93%; Rat: 86%

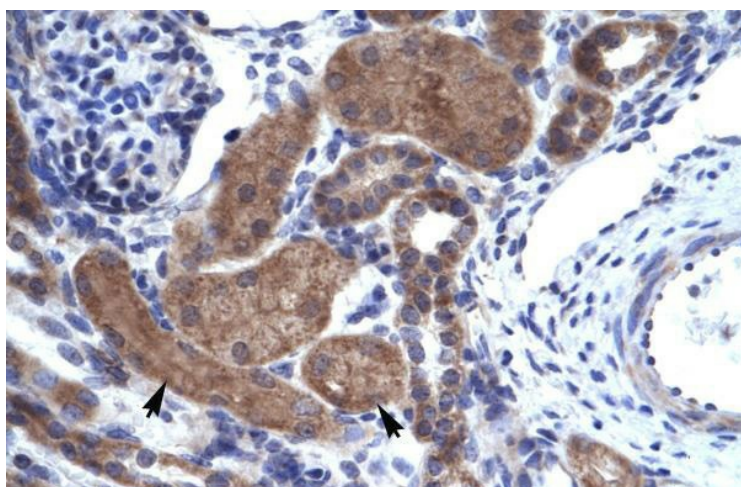


[View online »](#)

Product images:



WB Suggested Anti-ZNFN1A2 Antibody Titration: 5.0ug/ml; ELISA Titer: 1:62500; Positive Control: HepG2 cell lysate



Human kidney