

## Product datasheet for **TA329378**

### Gsh1 (GSX1) Rabbit Polyclonal Antibody

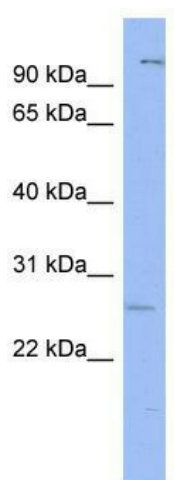
#### Product data:

Product Type:	Primary Antibodies
Applications:	WB
Recommended Dilution:	WB
Reactivity:	Human
Host:	Rabbit
Isotype:	IgG
Clonality:	Polyclonal
Immunogen:	The immunogen for anti-GSX1 antibody: synthetic peptide directed towards the N terminal of human GSX1. Synthetic peptide located within the following region: MPRSFLVDSLVLREAGEKKAPGSPPLFPYAVPPPHALHGLSPGACHAR
Formulation:	Liquid. Purified antibody supplied in 1x PBS buffer with 0.09% (w/v) sodium azide and 2% sucrose.
Conjugation:	Unconjugated
Storage:	Store at -20°C as received.
Stability:	Stable for 12 months from date of receipt.
Predicted Protein Size:	28 kDa
Gene Name:	GS homeobox 1
Database Link:	<a href="#">NP_663632</a> <a href="#">Entrez Gene 219409 Human</a> <a href="#">Q9H4S2</a>
Background:	GSX1 is a probable transcription factor that binds to the DNA sequence 5'-GC[TA][AC]ATTA[GA]-3'. GSX1 activates the transcription of the GHRH gene. GSX1 plays an important role in pituitary development.
Synonyms:	Gsh-1; GSH1
Note:	Immunogen sequence homology: Dog: 100%; Pig: 100%; Rat: 100%; Human: 100%; Mouse: 100%; Bovine: 100%; Rabbit: 100%; Horse: 93%
Protein Families:	Transcription Factors



[View online »](#)

## Product images:



WB Suggested Anti-GSX1 Antibody Titration: 0.2-1 ug/ml; ELISA Titer: 1:1562500; Positive Control: THP-1 cell lysate