

Product datasheet for **TA329377**

EVI1 (MECOM) Rabbit Polyclonal Antibody

Product data:

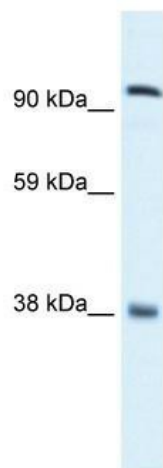
Product Type:	Primary Antibodies
Applications:	IHC, WB
Recommended Dilution:	WB, IHC
Reactivity:	Human
Host:	Rabbit
Isotype:	IgG
Clonality:	Polyclonal
Immunogen:	The immunogen for anti-EVI1 antibody: synthetic peptide directed towards the C terminal of human EVI1. Synthetic peptide located within the following region: HFTDSLKMRKMEDNQYSEAELSSFSTSHVPEELKQPLHRKSKSQAYAMML
Formulation:	Liquid. Purified antibody supplied in 1x PBS buffer with 0.09% (w/v) sodium azide and 2% sucrose. <i>Note that this product is shipped as lyophilized powder to China customers.</i>
Conjugation:	Unconjugated
Storage:	Store at -20°C as received.
Stability:	Stable for 12 months from date of receipt.
Predicted Protein Size:	118 kDa
Gene Name:	MDS1 and EVI1 complex locus
Database Link:	NP_005232 Entrez Gene 2122 Human Q03112
Background:	EVI1 promotes cell proliferation by interacting with BRG1 and blocking the repression of BRG1 on E2F1 activity.
Synonyms:	AML1-EVI-1; EVI1; MDS1; MDS1-EVI1; PRDM3
Note:	Immunogen sequence homology: Dog: 100%; Pig: 100%; Rat: 100%; Horse: 100%; Human: 100%; Bovine: 100%; Rabbit: 100%; Guinea pig: 100%; Mouse: 93%
Protein Families:	Druggable Genome, Transcription Factors



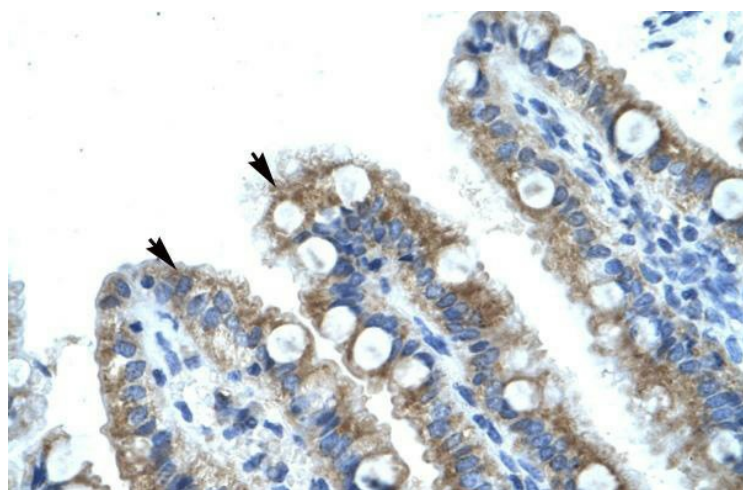
[View online »](#)

Protein Pathways: Chronic myeloid leukemia, MAPK signaling pathway, Pathways in cancer

Product images:



WB Suggested Anti-EVI1 Antibody Titration: 0.2-1 ug/ml; ELISA Titer: 1:12500; Positive Control: Human Lung



Human Intestine