

## Product datasheet for **TA329376**

### ETV5 Rabbit Polyclonal Antibody

#### Product data:

Product Type:	Primary Antibodies
Applications:	WB
Recommended Dilution:	IHC, WB
Reactivity:	Human
Host:	Rabbit
Isotype:	IgG
Clonality:	Polyclonal
Immunogen:	The immunogen for anti-ETV5 antibody: synthetic peptide directed towards the N terminal of human ETV5. Synthetic peptide located within the following region: MDGFYDQQVPMVPGKSRSEECRGRPVIDRKRKFLDLDLAHDSEELFQDL
Formulation:	Liquid. Purified antibody supplied in 1x PBS buffer with 0.09% (w/v) sodium azide and 2% sucrose. <i>Note that this product is shipped as lyophilized powder to China customers.</i>
Conjugation:	Unconjugated
Storage:	Store at -20°C as received.
Stability:	Stable for 12 months from date of receipt.
Predicted Protein Size:	58 kDa
Gene Name:	ETS variant 5
Database Link:	<a href="#">NP_004445</a> <a href="#">Entrez Gene 2119 Human P41161</a>
Background:	ETV5 Contains 1 ETS DNA-binding domain and belongs to the ETS family. The ETV5 gene expression is regulated by the conventional PKC (cPKC) pathway. ETV5 is subject to SUMO modification and this post-translational modification causes inhibition of transcription-enhancing activity. Phosphorylated ETV5 and the actin cytoskeleton regulate CD44-mediated hyaluronan binding in myeloid cells. ERMs (ezrin/radixin/moesin) function as adaptor molecules in the interactions of adhesion receptors and intracellular tyrosine kinases. ETV5 can cooperate with c-Jun and has a role in progression of breast cancer.



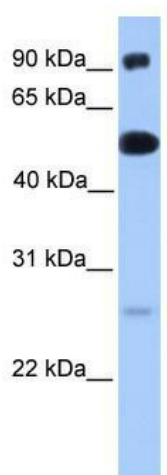
[View online »](#)

**Synonyms:** ERM

**Note:** Immunogen sequence homology: Dog: 100%; Pig: 100%; Rat: 100%; Horse: 100%; Human: 100%; Bovine: 100%; Rabbit: 100%; Guinea pig: 100%; Mouse: 92%; Zebrafish: 82%

**Protein Families:** Transcription Factors

**Product images:**



WB Suggested Anti-ETV5 Antibody Titration: 0.2-1 ug/ml; ELISA Titer: 1:7812500; Positive Control: Human Lung