

## Product datasheet for TA329372

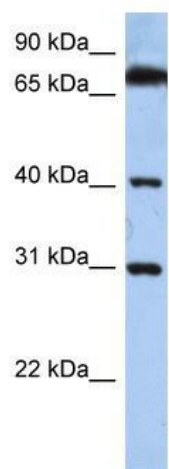
### DHR SX Rabbit Polyclonal Antibody

#### Product data:

Product Type:	Primary Antibodies
Applications:	WB
Recommended Dilution:	WB
Reactivity:	Human
Host:	Rabbit
Isotype:	IgG
Clonality:	Polyclonal
Immunogen:	The immunogen for anti-DHR SX antibody: synthetic peptide directed towards the C terminal of human DHR SX. Synthetic peptide located within the following region: DEGAWTSIYAAVTPELEGVGGHYLYNEKETKSLHVTYNQKLQQQLWSKSC
Formulation:	Liquid. Purified antibody supplied in 1x PBS buffer with 0.09% (w/v) sodium azide and 2% sucrose. <i>Note that this product is shipped as lyophilized powder to China customers.</i>
Conjugation:	Unconjugated
Storage:	Store at -20°C as received.
Stability:	Stable for 12 months from date of receipt.
Predicted Protein Size:	36 kDa
Gene Name:	dehydrogenase/reductase X-linked
Database Link:	<a href="#">NP_660160</a> <a href="#">Entrez Gene 207063 Human</a> <a href="#">Q8N5I4</a>
Background:	DHR SX belongs to the short-chain dehydrogenases/reductases (SDR) family. The exact function of DHR SX remains unknown.
Synonyms:	CXorf11; DHR S5X; DHR S5Y; DHR SX Y; DHR SY; SDR7C6; SDR46C1
Note:	Immunogen sequence homology: Dog: 100%; Human: 93%; Pig: 92%; Guinea pig: 92%; Rat: 79%
Protein Families:	Druggable Genome



[View online »](#)

**Product images:**

WB Suggested Anti-DHRSX Antibody Titration:  
0.2-1 ug/ml; ELISA Titer: 1:62500; Positive Control:  
Hela cell lysate