

Product datasheet for **TA329371**

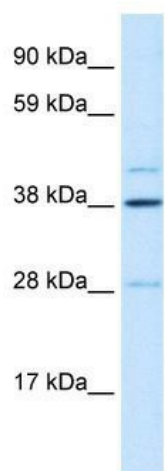
LASS3 (CERS3) Rabbit Polyclonal Antibody

Product data:

Product Type:	Primary Antibodies
Applications:	WB
Recommended Dilution:	WB
Reactivity:	Human
Host:	Rabbit
Isotype:	IgG
Clonality:	Polyclonal
Immunogen:	The immunogen for anti-LASS3 antibody: synthetic peptide directed towards the N terminal of human LASS3. Synthetic peptide located within the following region: RVFEKVASPLAKSFGIKETVRKVPNTVLENFFKHSTRQPLQTDIYGLA
Formulation:	Liquid. Purified antibody supplied in 1x PBS buffer with 0.09% (w/v) sodium azide and 2% sucrose.
Conjugation:	Unconjugated
Storage:	Store at -20°C as received.
Stability:	Stable for 12 months from date of receipt.
Predicted Protein Size:	46 kDa
Gene Name:	ceramide synthase 3
Database Link:	NP_849164 Entrez Gene 204219 Human Q8IU89
Background:	The gene encoding the hypothetical protein LASS3 is located on chromosome 15.
Synonyms:	ARCI9; LASS3
Note:	Immunogen sequence homology: Human: 100%; Dog: 93%; Pig: 92%; Bovine: 92%; Guinea pig: 92%; Horse: 85%; Mouse: 85%; Rat: 77%; Rabbit: 77%
Protein Families:	Transcription Factors, Transmembrane



[View online »](#)

Product images:

WB Suggested Anti-LASS3 Antibody Titration: 0.2-1 ug/ml; ELISA Titer: 1:12500; Positive Control: Human Liver