

Product datasheet for **TA329369**

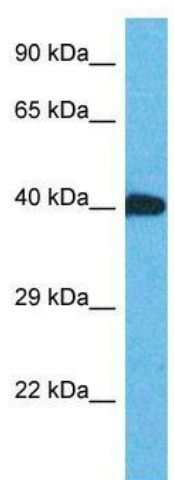
ZNF883 Rabbit Polyclonal Antibody

Product data:

Product Type:	Primary Antibodies
Applications:	WB
Recommended Dilution:	WB
Reactivity:	Human
Host:	Rabbit
Clonality:	Polyclonal
Immunogen:	The immunogen for Anti-ZNF883 antibody is: synthetic peptide directed towards the C-terminal region of Human ZNF883. Synthetic peptide located within the following region: YQCNECGKSFSLSSALTKHKRIHTRERPYQCTKCGDVFCHSTSLIRHQKT
Formulation:	Liquid. Purified antibody supplied in 1x PBS buffer with 0.09% (w/v) sodium azide and 2% sucrose.
Conjugation:	Unconjugated
Storage:	Store at -20°C as received.
Stability:	Stable for 12 months from date of receipt.
Predicted Protein Size:	41 kDa
Gene Name:	zinc finger protein 883
Database Link:	NP_001094808 Entrez Gene 169834 Human P0CG24
Background:	ZNF883 may be involved in transcriptional regulation.
Synonyms:	RP11-349F12.1
Note:	Immunogen sequence homology: Human: 100%; Dog: 83%



[View online »](#)

Product images:


Host: Rabbit; Target Name: ZNF883; Sample
Tissue: Thyroid Tumor lysates; Antibody Dilution:
1.0ug/ml