

Product datasheet for **TA329368**

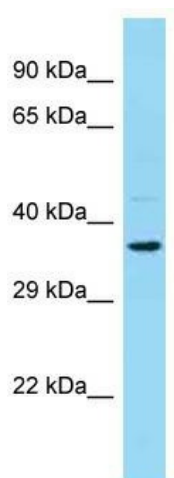
EMX2 Rabbit Polyclonal Antibody

Product data:

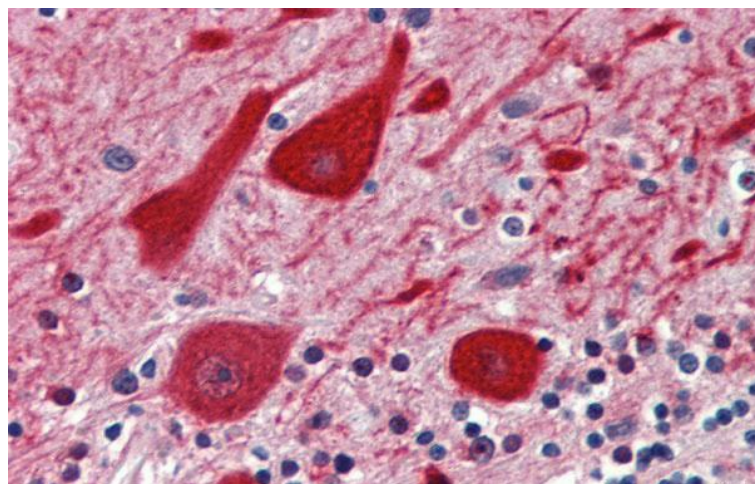
Product Type:	Primary Antibodies
Applications:	IHC, WB
Recommended Dilution:	WB, IHC
Reactivity:	Human
Host:	Rabbit
Isotype:	IgG
Clonality:	Polyclonal
Immunogen:	The immunogen for Anti-EMX2 antibody is: synthetic peptide directed towards the N-terminal region of Human EMX2. Synthetic peptide located within the following region: ESLVAKDSPLPARSEDPIRPAALSYANSSPINPFLNGFHSAAAAAAGRG
Formulation:	Liquid. Purified antibody supplied in 1x PBS buffer with 0.09% (w/v) sodium azide and 2% sucrose. <i>Note that this product is shipped as lyophilized powder to China customers.</i>
Conjugation:	Unconjugated
Storage:	Store at -20°C as received.
Stability:	Stable for 12 months from date of receipt.
Predicted Protein Size:	28 kDa
Gene Name:	empty spiracles homeobox 2
Database Link:	NP_004089 Entrez Gene 2018 Human Q04743
Background:	The homeodomain transcription factor EMX2 is critical for central nervous system and urogenital development. EMX1 along with EMX2 is related to the 'empty spiracles' gene expressed in the developing Drosophila head.
Synonyms:	empty spiracles homeobox 2; empty spiracles homolog 2; OTTHUMP00000020578
Note:	Immunogen sequence homology: Dog: 100%; Pig: 100%; Rat: 100%; Human: 100%; Mouse: 100%; Bovine: 100%; Rabbit: 100%; Guinea pig: 100%; Zebrafish: 92%
Protein Families:	Druggable Genome



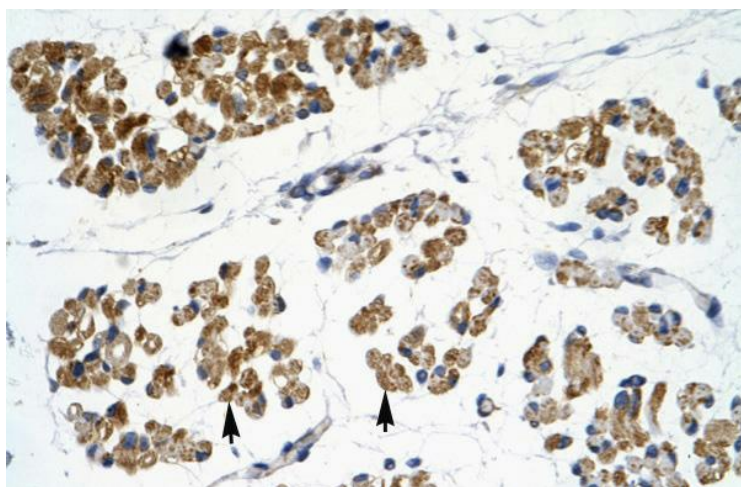
[View online »](#)

Product images:

WB Suggested Anti-EMX2 Antibody Titration: 0.2-1 ug/ml; ELISA Titer: 1:312500; Positive Control: HepG2 cell lysate



Rabbit Anti-EMX2 Antibody; Paraffin Embedded Tissue: Human Brain, cerebellum; Antibody Concentration: 5 ug/ml; Magnification: 400X



Rabbit Anti-EMX2 Antibody; Paraffin Embedded Tissue: Human Muscle; Cellular Data: Skeletal muscle cells; Antibody Concentration: 4.0-8.0 ug/ml; Magnification: 400X