

Product datasheet for **TA329367**

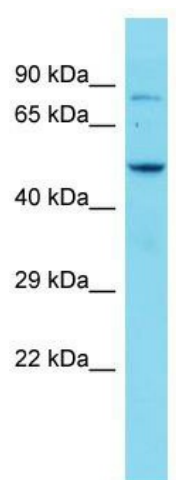
Zbtb7c Rabbit Polyclonal Antibody

Product data:

Product Type:	Primary Antibodies
Applications:	WB
Recommended Dilution:	WB
Reactivity:	Mouse
Host:	Rabbit
Clonality:	Polyclonal
Immunogen:	The immunogen for Anti-Zbtb7c antibody is: synthetic peptide directed towards the middle region of Mouse Zbtb7c. Synthetic peptide located within the following region: QDITCPQSPSKTDHLTEKDYSPTPRDFPDSFQPGSPGHLGVIRDFSIESL
Formulation:	Liquid. Purified antibody supplied in 1x PBS buffer with 0.09% (w/v) sodium azide and 2% sucrose.
Conjugation:	Unconjugated
Storage:	Store at -20°C as received.
Stability:	Stable for 12 months from date of receipt.
Predicted Protein Size:	69 kDa
Gene Name:	zinc finger and BTB domain containing 7C
Database Link:	NP_663331 Entrez Gene 207259 Mouse Q8VCZ7
Background:	Zbtb7c may be a tumor suppressor gene.
Synonyms:	APM-1; APM1; B230208J24Rik; FLJ37907; ZBTB36; ZNF857C
Note:	Immunogen sequence homology: Dog: 100%; Pig: 100%; Rat: 100%; Horse: 100%; Human: 100%; Guinea pig: 100%; Mouse: 93%; Goat: 86%; Bovine: 86%; Rabbit: 86%



[View online »](#)

Product images:


Host: Rabbit; Target Name: Zbtb7c; Sample
Tissue: Mouse Brain lysates; Antibody Dilution:
1.0ug/ml