

## Product datasheet for **TA329366**

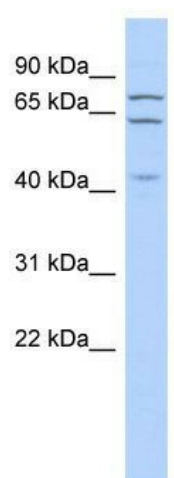
### ELF4 Rabbit Polyclonal Antibody

#### Product data:

Product Type:	Primary Antibodies
Applications:	WB
Recommended Dilution:	WB
Reactivity:	Human
Host:	Rabbit
Isotype:	IgG
Clonality:	Polyclonal
Immunogen:	The immunogen for anti-ELF4 antibody: synthetic peptide directed towards the N terminal of human ELF4. Synthetic peptide located within the following region: RKTKGNRSTSPVTDPSIPIRKKSKDGKGSTIYLWEFLALLQDRNTCPKY
Formulation:	Liquid. Purified antibody supplied in 1x PBS buffer with 0.09% (w/v) sodium azide and 2% sucrose. <i>Note that this product is shipped as lyophilized powder to China customers.</i>
Conjugation:	Unconjugated
Storage:	Store at -20°C as received.
Stability:	Stable for 12 months from date of receipt.
Predicted Protein Size:	71 kDa
Gene Name:	E74 like ETS transcription factor 4
Database Link:	<a href="#">NP_001412</a> <a href="#">Entrez Gene 2000 Human Q99607</a>
Background:	ELF4 is a member of the ETS gene family of transcription factors. ELF4 is involved in inducing cell cycle arrest in naive CD8+ T cells.
Synonyms:	ELFR; MEF
Note:	Immunogen sequence homology: Dog: 100%; Pig: 100%; Rat: 100%; Horse: 100%; Human: 100%; Guinea pig: 100%; Mouse: 93%; Bovine: 93%; Rabbit: 93%
Protein Families:	Transcription Factors



[View online »](#)

**Product images:**

WB Suggested Anti-ELF4 Antibody Titration: 0.2-1 ug/ml; ELISA Titer: 1:312500; Positive Control: OVCAR-3 cell lysate ELF4 is supported by BioGPS gene expression data to be expressed in OVCAR3