

## Product datasheet for **TA329364**

### ELF2 Rabbit Polyclonal Antibody

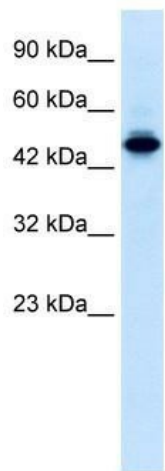
#### Product data:

Product Type:	Primary Antibodies
Applications:	WB
Recommended Dilution:	WB
Reactivity:	Human, Mouse
Host:	Rabbit
Isotype:	IgG
Clonality:	Polyclonal
Immunogen:	The immunogen for anti-ELF2 antibody: synthetic peptide directed towards the N terminal of human ELF2. Synthetic peptide located within the following region: TSPDSHEPMKKKKVGRPKTQQSPISNGSPELGIIKKKPREGKGNNTTYLWE
Formulation:	Liquid. Purified antibody supplied in 1x PBS buffer with 0.09% (w/v) sodium azide and 2% sucrose. <i>Note that this product is shipped as lyophilized powder to China customers.</i>
Conjugation:	Unconjugated
Storage:	Store at -20°C as received.
Stability:	Stable for 12 months from date of receipt.
Predicted Protein Size:	57 kDa
Gene Name:	E74 like ETS transcription factor 2
Database Link:	<a href="#">NP_006865</a> <a href="#">Entrez Gene 1998 Human Q15723</a>
Background:	The ELF2 gene encodes a protein that physically interacts with AML1 and mediates opposing effects on AML1-mediated transcription of the B cell-specific blk gene.
Synonyms:	b; EU32; NERF; NERF-1A; NERF-1a; NERF-1B; NERF-2
Note:	Immunogen sequence homology: Dog: 100%; Pig: 100%; Rat: 100%; Horse: 100%; Human: 100%; Mouse: 100%; Bovine: 100%; Rabbit: 100%; Guinea pig: 100%
Protein Families:	Druggable Genome, Transcription Factors

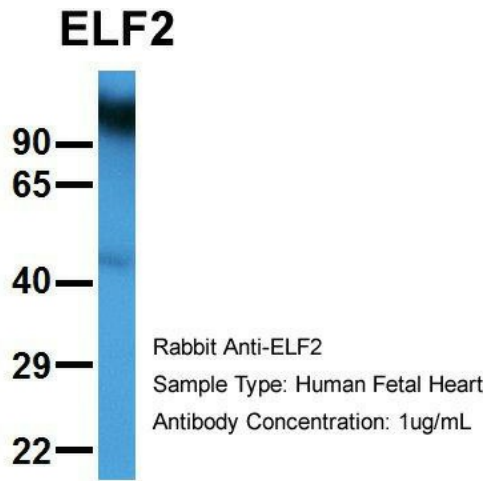


[View online »](#)

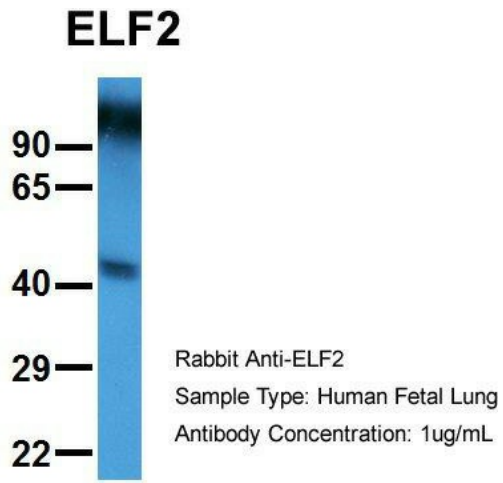
Product images:



WB Suggested Anti-ELF2 Antibody Titration: 0.2-1 ug/ml; ELISA Titer: 1:12500; Positive Control: Jurkat cell lysate



Host: Rabbit; Target Name: ELF2; Sample Tissue: Human Fetal Heart; Antibody Dilution: 1.0ug/ml



Host: Rabbit; Target Name: ELF2; Sample Tissue: Human Fetal Lung; Antibody Dilution: 1.0ug/ml