

Product datasheet for **TA329361**

Rcan1 Rabbit Polyclonal Antibody

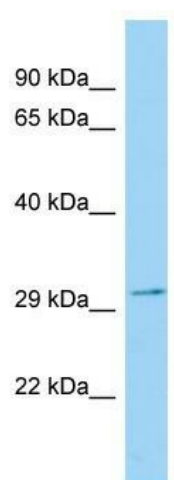
Product data:

Product Type:	Primary Antibodies
Applications:	WB
Recommended Dilution:	WB
Reactivity:	Rat
Host:	Rabbit
Isotype:	IgG
Clonality:	Polyclonal
Immunogen:	The immunogen for Anti-Rcan1 antibody is: synthetic peptide directed towards the N-terminal region of Rat Rcan1. Synthetic peptide located within the following region: HLDPRVFDGLCRAKFESLFRITYDKDITFQYFKSFKRVRINFSNPLSAAD
Formulation:	Liquid. Purified antibody supplied in 1x PBS buffer with 0.09% (w/v) sodium azide and 2% sucrose. <i>Note that this product is shipped as lyophilized powder to China customers.</i>
Conjugation:	Unconjugated
Storage:	Store at -20°C as received.
Stability:	Stable for 12 months from date of receipt.
Predicted Protein Size:	28 kDa
Gene Name:	regulator of calcineurin 1
Database Link:	NP_714946 Entrez Gene 266766 Rat Q6IN33
Background:	The function of this protein remains unknown.
Synonyms:	Adapt78; CSP1; DSC1; DSCR1; MCIP1; RCN1
Note:	Immunogen sequence homology: Dog: 100%; Pig: 100%; Rat: 100%; Horse: 100%; Human: 100%; Sheep: 100%; Bovine: 100%; Rabbit: 100%; Guinea pig: 100%; Mouse: 93%



[View online »](#)

Product images:



WB Suggested Anti-Rcan1 Antibody; Titration: 1.0 ug/ml; Positive Control: Rat Thymus