

## Product datasheet for **TA329359**

### SP7 Rabbit Polyclonal Antibody

#### Product data:

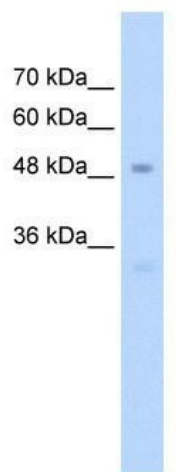
Product Type:	Primary Antibodies
Applications:	WB
Recommended Dilution:	WB
Reactivity:	Human
Host:	Rabbit
Isotype:	IgG
Clonality:	Polyclonal
Immunogen:	The immunogen for anti-SP7 antibody: synthetic peptide directed towards the C terminal of human SP7. Synthetic peptide located within the following region: RTHGEPGPGPPSPGPKELGEGRSTGEEEASQTPRPSASPATPEKAPGGSP
Formulation:	Liquid. Purified antibody supplied in 1x PBS buffer with 0.09% (w/v) sodium azide and 2% sucrose. <i>Note that this product is shipped as lyophilized powder to China customers.</i>
Conjugation:	Unconjugated
Storage:	Store at -20°C as received.
Stability:	Stable for 12 months from date of receipt.
Predicted Protein Size:	45 kDa
Gene Name:	Sp7 transcription factor
Database Link:	<a href="#">NP_690599</a> <a href="#">Entrez Gene 121340 Human Q8TDD2</a>
Background:	SP7 is a C2H2-type zinc finger transcription factor of the SP gene family and a putative master regulator of bone cell differentiation.SP7 is a C2H2-type zinc finger transcription factor of the SP gene family and a putative master regulator of bone cell differentiation (Gao et al., 2004). [supplied by OMIM]
Synonyms:	OI11; OI12; osterix; OSX
Note:	Immunogen sequence homology: Human: 100%; Bovine: 100%; Pig: 93%; Rat: 93%; Horse: 93%; Guinea pig: 93%; Mouse: 92%; Rabbit: 86%



[View online »](#)

Protein Families: ES Cell Differentiation/IPS, Transcription Factors

**Product images:**



WB Suggested Anti-SP7 Antibody; Titration: 2.5 ug/ml; Positive Control: Jurkat Whole Cell