

Product datasheet for **TA329358**

SP7 Rabbit Polyclonal Antibody

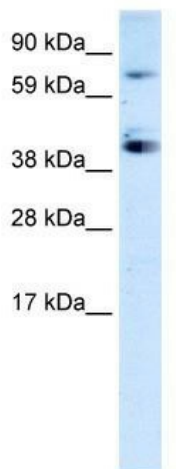
Product data:

Product Type:	Primary Antibodies
Applications:	IHC, WB
Recommended Dilution:	WB, IHC
Reactivity:	Human
Host:	Rabbit
Isotype:	IgG
Clonality:	Polyclonal
Immunogen:	The immunogen for anti-SP7 antibody: synthetic peptide directed towards the C terminal of human SP7. Synthetic peptide located within the following region: RTHGEPGPGPPSPGPKELGEGRSTGEEEASQTPRPSASPATPEKAPGGSP
Formulation:	Liquid. Purified antibody supplied in 1x PBS buffer with 0.09% (w/v) sodium azide and 2% sucrose. <i>Note that this product is shipped as lyophilized powder to China customers.</i>
Conjugation:	Unconjugated
Storage:	Store at -20°C as received.
Stability:	Stable for 12 months from date of receipt.
Predicted Protein Size:	45 kDa
Gene Name:	Sp7 transcription factor
Database Link:	NP_690599 Entrez Gene 121340 Human Q8TDD2
Background:	SP7 is a C2H2-type zinc finger transcription factor of the SP gene family and a putative master regulator of bone cell differentiation.
Synonyms:	OI11; OI12; osterix; OSX
Note:	Immunogen sequence homology: Human: 100%; Bovine: 100%; Pig: 93%; Rat: 93%; Horse: 93%; Guinea pig: 93%; Mouse: 92%; Rabbit: 86%
Protein Families:	ES Cell Differentiation/IPS, Transcription Factors

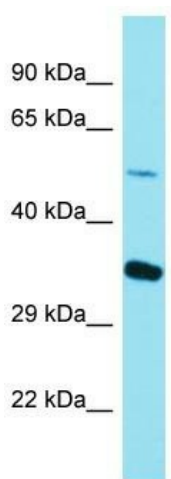


[View online »](#)

Product images:

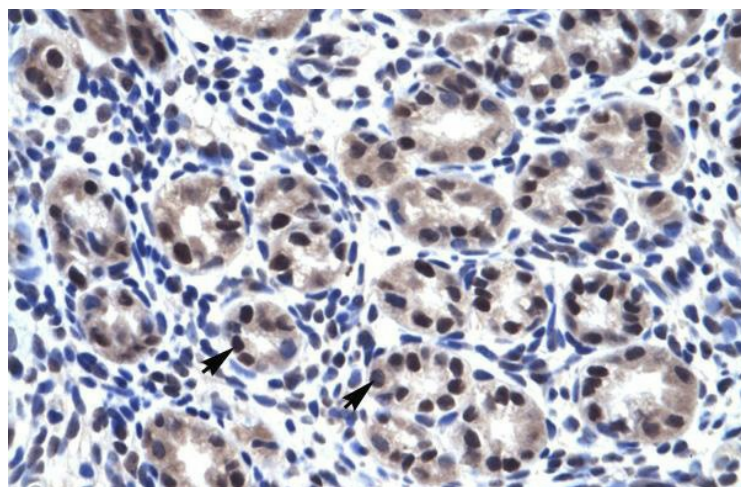


WB Suggested Anti-SP7 Antibody Titration: 0.2-1 ug/ml; ELISA Titer: 1:1562500; Positive Control: Jurkat cell lysate



Host: Rabbit
 Target Name: SP7
 Sample Tissue: Jurkat Cell Lysate
 Antibody Dilution: 1.0µg/ml

Host: Rabbit; Target Name: SP7; Sample Tissue: Jurkat Whole Cell lysates; Antibody Dilution: 1.0ug/ml



Human Intestine