

Product datasheet for **TA329357**

DMRT2 Rabbit Polyclonal Antibody

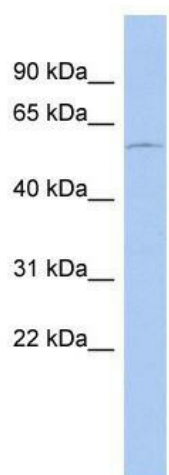
Product data:

Product Type:	Primary Antibodies
Applications:	WB
Recommended Dilution:	WB
Reactivity:	Human
Host:	Rabbit
Isotype:	IgG
Clonality:	Polyclonal
Immunogen:	The immunogen for anti-DMRT2 antibody: synthetic peptide directed towards the N terminal of human DMRT2. Synthetic peptide located within the following region: RWRDCQCANCLLVVERQVRVMAAQVALRRQQATEDKKGLSGKQNNFERKAV
Formulation:	Liquid. Purified antibody supplied in 1x PBS buffer with 0.09% (w/v) sodium azide and 2% sucrose. <i>Note that this product is shipped as lyophilized powder to China customers.</i>
Conjugation:	Unconjugated
Storage:	Store at -20°C as received.
Stability:	Stable for 12 months from date of receipt.
Predicted Protein Size:	62 kDa
Gene Name:	doublesex and mab-3 related transcription factor 2
Database Link:	NP_870987 Entrez Gene 10655 Human Q9Y5R5
Background:	Gonadal dysgenesis in 9p-deleted individuals might be due to combined hemizyosity of DMRT1 and DMRT2.
Synonyms:	doublesex and mab-3 related transcription factor 2; OTTHUMP00000020964; OTTHUMP00000020965; OTTHUMP00000020966; OTTHUMP00000020967; terra-like protein
Note:	Immunogen sequence homology: Dog: 100%; Pig: 100%; Rat: 100%; Horse: 100%; Human: 100%; Bovine: 100%; Rabbit: 100%; Guinea pig: 100%; Mouse: 92%
Protein Families:	Transcription Factors, Transmembrane



[View online »](#)

Product images:



WB Suggested Anti-DMRT2 Antibody Titration:
0.2-1 ug/ml; ELISA Titer: 1:100; Positive Control:
OVCAR-3 cell lysate