

## Product datasheet for **TA329356**

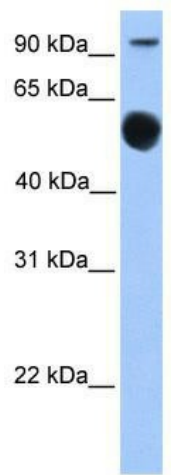
### EBF1 Rabbit Polyclonal Antibody

#### Product data:

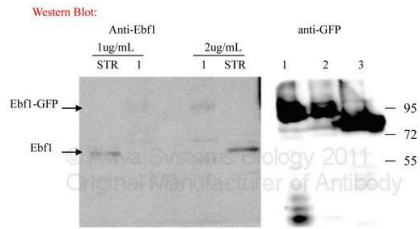
Product Type:	Primary Antibodies
Applications:	WB
Recommended Dilution:	WB
Reactivity:	Human
Host:	Rabbit
Isotype:	IgG
Clonality:	Polyclonal
Immunogen:	The immunogen for anti-EBF1 antibody: synthetic peptide directed towards the N terminal of human EBF1. Synthetic peptide located within the following region: MCRVLLTHEIMCSRCCDKKSCGNRNETPSDPVIIDRFFLKFFLKCNQNCL
Formulation:	Liquid. Purified antibody supplied in 1x PBS buffer with 0.09% (w/v) sodium azide and 2% sucrose. <i>Note that this product is shipped as lyophilized powder to China customers.</i>
Conjugation:	Unconjugated
Storage:	Store at -20°C as received.
Stability:	Stable for 12 months from date of receipt.
Predicted Protein Size:	64 kDa
Gene Name:	early B-cell factor 1
Database Link:	<a href="#">NP_076870</a> <a href="#">Entrez Gene 1879 Human Q9UH73</a>
Background:	EBF1 belongs to the COE family. It contains 1 IPT/TIG domain. EBF1 is a transcriptional activator which recognizes variations of the palindromic sequence 5'-ATTCCCNNGGAATT-3'.
Synonyms:	COE1; E-1; EBF; O; OLF1
Note:	Immunogen sequence homology: Dog: 100%; Pig: 100%; Rat: 100%; Horse: 100%; Human: 100%; Mouse: 100%; Bovine: 100%; Rabbit: 100%; Zebrafish: 100%; Guinea pig: 100%
Protein Families:	Transcription Factors



[View online »](#)

**Product images:**


WB Suggested Anti-EBF1 Antibody Titration: 0.2-1 ug/ml; ELISA Titer: 1:312500; Positive Control: Human brain



- 1: Ebf1-GFP(293T cell lysate)
- 2 :Ebf2-GFP(293T cell lysate)
- 3 :Ebf3-GFP(293T cell lysate)
- STR : striatum tissue lysate

1,2,3: detecting exogenous Ebf1 and the specificity of the antibody  
 STR: detecting endogenous Ebf1

We did the experiment with standard western blot procedures, and the secondary antibody was Goat anti-rabbit at the dilution of 1:5000( Sigma).

Conclusion: the Ebf1 antibody can detect both exogenous and endogenous Ebf1 protein with no crossing reactivity with other Ebf family members such as Ebf2 and Ebf3.

-Sen Li (From Dr. Jiawei Zhou's Lab)

EBF1 antibody - N-terminal region validated by WB using striatum tissue lysate