

Product datasheet for **TA329355**

E2F2 Rabbit Polyclonal Antibody

Product data:

Product Type:	Primary Antibodies
Applications:	WB
Recommended Dilution:	WB
Reactivity:	Human
Host:	Rabbit
Clonality:	Polyclonal
Immunogen:	The immunogen for Anti-E2F2 antibody is: synthetic peptide directed towards the middle region of Human E2F2. Synthetic peptide located within the following region: CSLSFKHLTEDKANKRLAYVTYQDIRAVGNFKEQTVIIVKAPPQTRLEVP
Formulation:	Liquid. Purified antibody supplied in 1x PBS buffer with 0.09% (w/v) sodium azide and 2% sucrose. <i>Note that this product is shipped as lyophilized powder to China customers.</i>
Conjugation:	Unconjugated
Storage:	Store at -20°C as received.
Stability:	Stable for 12 months from date of receipt.
Predicted Protein Size:	48 kDa
Gene Name:	E2F transcription factor 2
Database Link:	NP_004082 Entrez Gene 1870 Human Q14209
Background:	E2F2 is a member of the E2F family of transcription factors. The E2F family plays a crucial role in the control of cell cycle and action of tumor suppressor proteins and is also a target of the transforming proteins of small DNA tumor viruses. The E2F proteins contain several evolutionally conserved domains found in most members of the family. These domains include a DNA binding domain, a dimerization domain which determines interaction with the differentiation regulated transcription factor proteins (DP), a transactivation domain enriched in acidic amino acids, and a tumor suppressor protein association domain which is embedded within the transactivation domain.
Synonyms:	E2F-2



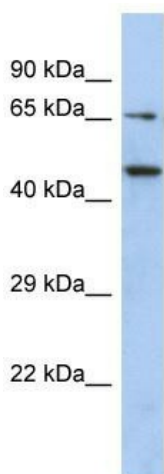
[View online »](#)

Note: Immunogen sequence homology: Dog: 100%; Pig: 100%; Rat: 100%; Human: 100%; Mouse: 100%; Bovine: 100%; Guinea pig: 87%; Rabbit: 79%; Zebrafish: 75%

Protein Families: Druggable Genome, Transcription Factors

Protein Pathways: Bladder cancer, Cell cycle, Chronic myeloid leukemia, Glioma, Melanoma, Non-small cell lung cancer, Pancreatic cancer, Pathways in cancer, Prostate cancer, Small cell lung cancer

Product images:



Host: Rabbit
Target Name: E2F2
Sample Tissue: PANC1 Cell Lysate
Antibody Dilution: 1.0 μ g/ml

Host: Rabbit; Target Name: E2F2; Sample Tissue: PANC1 Whole Cell lysates; Antibody Dilution: 1.0 μ g/ml