

Product datasheet for **TA329354**

E2F2 Rabbit Polyclonal Antibody

Product data:

Product Type:	Primary Antibodies
Applications:	WB
Recommended Dilution:	WB
Reactivity:	Human
Host:	Rabbit
Isotype:	IgG
Clonality:	Polyclonal
Immunogen:	The immunogen for anti-E2F2 antibody: synthetic peptide directed towards the middle region of human E2F2. Synthetic peptide located within the following region: QWVGRGMFEDPTRPGKQQQLGQELKELMNTEQALDQLIQSCSLSFKHLTE
Formulation:	Liquid. Purified antibody supplied in 1x PBS buffer with 0.09% (w/v) sodium azide and 2% sucrose. <i>Note that this product is shipped as lyophilized powder to China customers.</i>
Conjugation:	Unconjugated
Storage:	Store at -20°C as received.
Stability:	Stable for 12 months from date of receipt.
Predicted Protein Size:	48 kDa
Gene Name:	E2F transcription factor 2
Database Link:	NP_004082 Entrez Gene 1870 Human Q14209



[View online »](#)

Background:

The protein encoded by this gene is a member of the E2F family of transcription factors. The E2F family plays a crucial role in the control of cell cycle and action of tumor suppressor proteins and is also a target of the transforming proteins of small DNA tumor viruses. The E2F proteins contain several evolutionally conserved domains found in most members of the family. These domains include a DNA binding domain, a dimerization domain which determines interaction with the differentiation regulated transcription factor proteins (DP), a transactivation domain enriched in acidic amino acids, and a tumor suppressor protein association domain which is embedded within the transactivation domain. This protein and another 2 members, E2F1 and E2F3, have an additional cyclin binding domain. This protein binds specifically to retinoblastoma protein pRB in a cell-cycle dependent manner, and it exhibits overall 46% amino acid identity to E2F1. [provided by RefSeq, Jul 2008]

Synonyms:

E2F-2

Note:

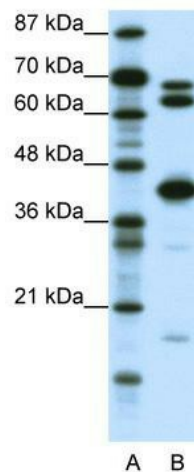
Immunogen sequence homology: Dog: 100%; Horse: 100%; Human: 100%; Bovine: 100%; Pig: 93%; Rat: 93%; Guinea pig: 93%; Mouse: 90%; Rabbit: 86%

Protein Families:

Druggable Genome, Transcription Factors

Protein Pathways:

Bladder cancer, Cell cycle, Chronic myeloid leukemia, Glioma, Melanoma, Non-small cell lung cancer, Pancreatic cancer, Pathways in cancer, Prostate cancer, Small cell lung cancer

Product images:

WB Suggested Anti-E2F2 Antibody Titration: 0.2-1 ug/ml; ELISA Titer: 1:312500; Positive Control: Jurkat cell lysate E2F2 is supported by BioGPS gene expression data to be expressed in Jurkat