

Product datasheet for **TA329353**

SLC26A3 Rabbit Polyclonal Antibody

Product data:

Product Type:	Primary Antibodies
Applications:	WB
Recommended Dilution:	WB
Reactivity:	Human
Host:	Rabbit
Isotype:	IgG
Clonality:	Polyclonal
Immunogen:	The immunogen for anti-SLC26A3 antibody: synthetic peptide directed towards the middle region of human SLC26A3. Synthetic peptide located within the following region: DAVLHILMKKDYSTSKFNPSQEKDGGKIDFTINTNGGLRNRVYEVVETKF
Formulation:	Liquid. Purified antibody supplied in 1x PBS buffer with 0.09% (w/v) sodium azide and 2% sucrose. <i>Note that this product is shipped as lyophilized powder to China customers.</i>
Conjugation:	Unconjugated
Storage:	Store at -20°C as received.
Stability:	Stable for 12 months from date of receipt.
Predicted Protein Size:	84 kDa
Gene Name:	solute carrier family 26 member 3
Database Link:	NP_000102 Entrez Gene 1811 Human P40879



[View online »](#)

Background:

SLC26A3 is a transmembrane glycoprotein that transports chloride ions across the cell membrane in exchange for bicarbonate ions. It is localized to the mucosa of the lower intestinal tract, particularly to the apical membrane of columnar epithelium and some goblet cells. The protein is essential for intestinal chloride absorption, and mutations in this gene have been associated with congenital chloride diarrhea. The protein encoded by this gene is a transmembrane glycoprotein that functions as a sulfate transporter. It is localized to the mucosa of the lower intestinal tract, particularly to the apical membrane of columnar epithelium and some goblet cells. Mutations in this gene have been associated with congenital chloride diarrhea. Publication Note: This RefSeq record includes a subset of the publications that are available for this gene. Please see the Entrez Gene record to access additional publications.

Synonyms:

CLD; DRA

Note:

Immunogen sequence homology: Pig: 100%; Human: 100%; Sheep: 100%; Bovine: 100%; Rat: 93%; Mouse: 93%; Rabbit: 86%; Dog: 79%; Guinea pig: 79%

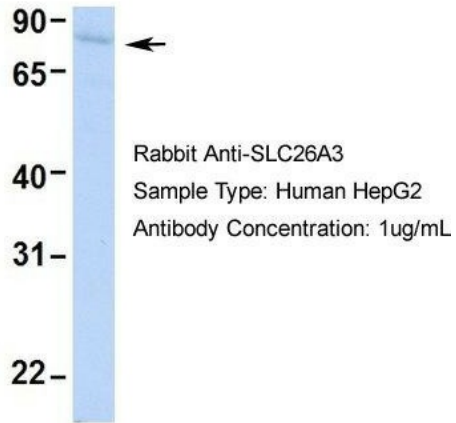
Protein Families:

Druggable Genome, Transcription Factors, Transmembrane

Product images:

WB Suggested Anti-SLC26A3 Antibody Titration:
0.2-1 ug/ml; ELISA Titer: 1:312500; Positive
Control: Human Placenta

SLC26A3



Host: Rabbit; Target Name: SLC26A3; Sample Tissue: HepG2; Antibody Dilution: 1.0ug/ml; SLC26A3 is supported by BioGPS gene expression data to be expressed in HepG2