

Product datasheet for **TA329352**

DLX5 Rabbit Polyclonal Antibody

Product data:

Product Type:	Primary Antibodies
Applications:	WB
Recommended Dilution:	WB
Reactivity:	Human, Mouse
Host:	Rabbit
Isotype:	IgG
Clonality:	Polyclonal
Immunogen:	The immunogen for anti-DLX5 antibody: synthetic peptide directed towards the N terminal of human DLX5. Synthetic peptide located within the following region: NPYQYQHGVNGSAGSYPAKAYADYSYASSYHQYGGAYNRVPSATNQPEK
Formulation:	Liquid. Purified antibody supplied in 1x PBS buffer with 0.09% (w/v) sodium azide and 2% sucrose. <i>Note that this product is shipped as lyophilized powder to China customers.</i>
Conjugation:	Unconjugated
Storage:	Store at -20°C as received.
Stability:	Stable for 12 months from date of receipt.
Predicted Protein Size:	32 kDa
Gene Name:	distal-less homeobox 5
Database Link:	NP_005212 Entrez Gene 13395 Mouse Entrez Gene 1749 Human P56178



[View online »](#)

Background:

DLX5 is a member of a homeobox transcription factor gene family similar to the Drosophila distal-less gene. This protein may play a role in bone development and fracture healing. Mutation in its gene, which is located in a tail-to-tail configuration with another member of the family on the long arm of chromosome 7, may be associated with split-hand/split-foot malformation. This gene encodes a member of a homeobox transcription factor gene family similar to the Drosophila distal-less gene. The encoded protein may play a role in bone development and fracture healing. Mutation in this gene, which is located in a tail-to-tail configuration with another member of the family on the long arm of chromosome 7, may be associated with split-hand/split-foot malformation. Publication Note: This RefSeq record includes a subset of the publications that are available for this gene. Please see the Entrez Gene record to access additional publications.

Synonyms:

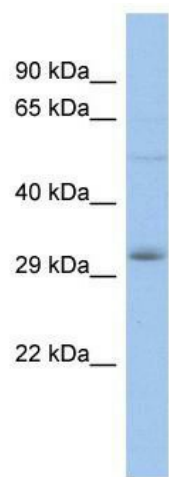
SHFM1D

Note:

Immunogen sequence homology: Dog: 100%; Pig: 100%; Rat: 100%; Horse: 100%; Human: 100%; Mouse: 100%; Bovine: 100%; Rabbit: 100%; Guinea pig: 93%; Zebrafish: 75%

Protein Families:

ES Cell Differentiation/IPS, Transcription Factors

Product images:

WB Suggested Anti-DLX5 Antibody Titration: 0.2-1 ug/ml; ELISA Titer: 1:312500; Positive Control: THP-1 cell lysate