

## Product datasheet for **TA329349**

### DLX2 Rabbit Polyclonal Antibody

#### Product data:

Product Type:	Primary Antibodies
Applications:	IHC, WB
Recommended Dilution:	WB, IHC
Reactivity:	Human, Mouse, Rat
Host:	Rabbit
Isotype:	IgG
Clonality:	Polyclonal
Immunogen:	The immunogen for anti-DLX2 antibody: synthetic peptide directed towards the N terminal of human DLX2. Synthetic peptide located within the following region: MTGVFDSLVAADMHSTQIAASSTYHQHQPPSGGGAGPGGNSSSSSSLHKP
Formulation:	Liquid. Purified antibody supplied in 1x PBS buffer with 0.09% (w/v) sodium azide and 2% sucrose. <i>Note that this product is shipped as lyophilized powder to China customers.</i>
Conjugation:	Unconjugated
Storage:	Store at -20°C as received.
Stability:	Stable for 12 months from date of receipt.
Predicted Protein Size:	34 kDa
Gene Name:	distal-less homeobox 2
Database Link:	<a href="#">NP_004396</a> <a href="#">Entrez Gene 13392 Mouse</a> <a href="#">Entrez Gene 296499 Rat</a> <a href="#">Entrez Gene 1746 Human</a> <a href="#">Q07687</a>
Background:	Many vertebrate homeo box-containing genes have been identified on the basis of their sequence similarity with Drosophila developmental genes. Members of the Dlx gene family contain a homeobox that is related to that of Distal-less (Dll), a gene expressed in the head and limbs of the developing fruit fly. The Distal-less (Dlx) family of genes comprises at least 6 different members, DLX1-DLX6. The DLX proteins are postulated to play a role in forebrain and craniofacial development.
Synonyms:	TES-1; TES1



[View online »](#)

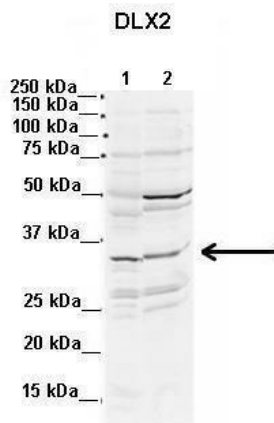
**Note:** Immunogen sequence homology: Pig: 100%; Human: 100%; Guinea pig: 100%; Dog: 92%; Mouse: 92%; Bovine: 87%; Horse: 86%

**Protein Families:** ES Cell Differentiation/IPS, Stem cell relevant signaling - TGFb/BMP signaling pathway, Transcription Factors

**Product images:**

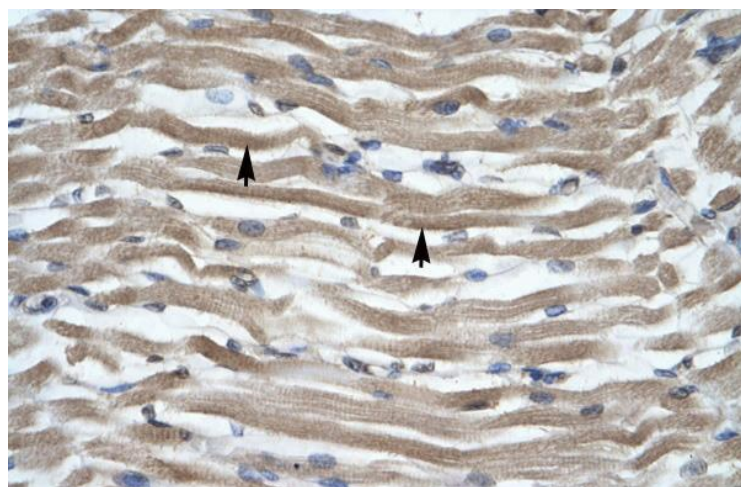


WB Suggested Anti-DLX2 Antibody Titration: 1.25ug/ml; ELISA Titer: 1:1562500; Positive Control: Jurkat cell lysate



Lanes: 1. Mouse WT brain extract (80ug) 2. Rat brain extract (80ug); Primary Antibody Dilution: 2ug/ml; Secondary Antibody: IRDye 800CW goat anti-rabbit from Li-COR Bioscience; Secondary Antibody Dilution: 1: 20,000; Gene Name: DLX2; Submitted by: Dr. Yuzhi Chen, University of Arkansas for Medical Science;

See Immunoblot 2 Data and Customer Feedback for more information



Human Muscle