

Product datasheet for **TA329346**

AE binding protein 1 (AEBP1) Rabbit Polyclonal Antibody

Product data:

Product Type:	Primary Antibodies
Applications:	IHC, WB
Recommended Dilution:	WB, IHC
Reactivity:	Human
Host:	Rabbit
Isotype:	IgG
Clonality:	Polyclonal
Immunogen:	The immunogen for anti-AEBP1 antibody: synthetic peptide directed towards the N terminal of human AEBP1. Synthetic peptide located within the following region: VPPEKTKDKGKKGKDKGPKVPKESLEGSPRPPKKGKEKPPKATKKPKEK
Formulation:	Liquid. Purified antibody supplied in 1x PBS buffer with 0.09% (w/v) sodium azide and 2% sucrose. <i>Note that this product is shipped as lyophilized powder to China customers.</i>
Conjugation:	Unconjugated
Storage:	Store at -20°C as received.
Stability:	Stable for 12 months from date of receipt.
Predicted Protein Size:	131 kDa
Gene Name:	AE binding protein 1
Database Link:	NP_001120 Entrez Gene 165 Human Q8IUX7
Background:	The adipocyte enhancer binding protein 1 (AEBP1) is a transcriptional repressor with carboxypeptidase (CP) activity. This protein binds to a regulatory sequence, adipocyte enhancer 1 (AE-1), located in the proximal promoter region of the adipose P2 (aP2) gene, which encodes the adipocyte fatty-acid binding protein. It is characterized as a member of the regulatory B-like CP family. This protein seems to be activated by a novel mechanism, whereby the direct binding of DNA enhances its protease activity. AEBP1 may play a role in differentiated vascular smooth muscle cells.



[View online »](#)

Synonyms: ACLP

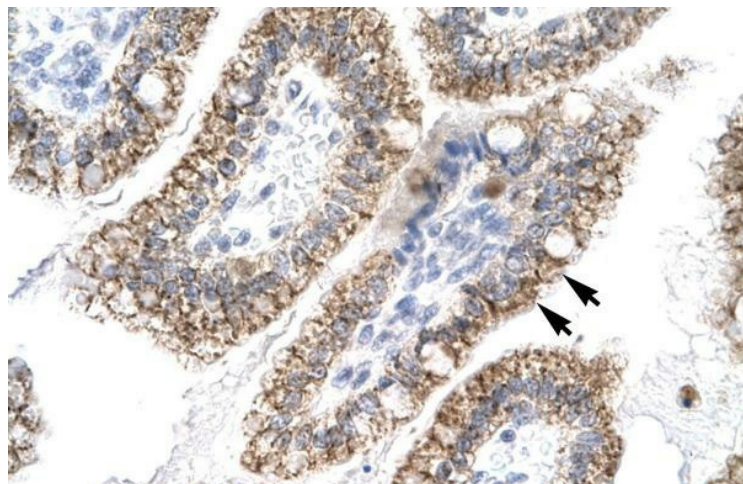
Note: Immunogen sequence homology: Pig: 100%; Rat: 100%; Horse: 100%; Human: 100%; Rabbit: 100%; Guinea pig: 100%; Dog: 92%; Mouse: 92%; Bovine: 92%

Protein Families: Druggable Genome, Protease, Transcription Factors

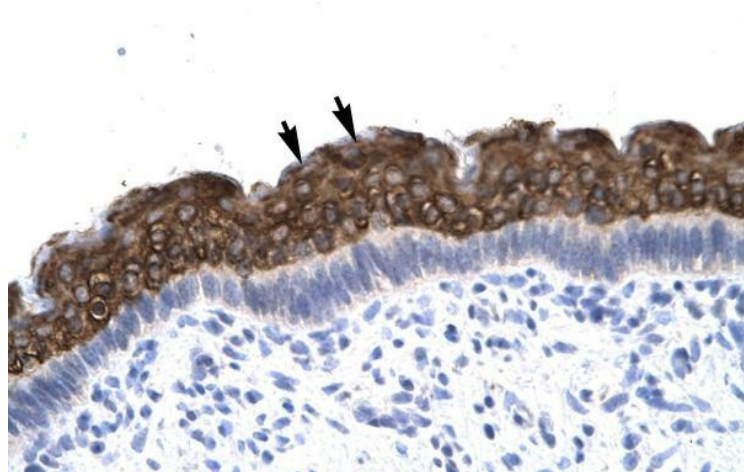
Product images:



WB Suggested Anti-AEBP1 Antibody Titration: 0.2-1 ug/ml; ELISA Titer: 1:1562500; Positive Control: HepG2 cell lysate



Human Intestine



Human Spermatophore