

Product datasheet for **TA329344**

D Box Binding Protein (DBP) Rabbit Polyclonal Antibody

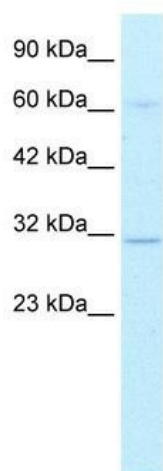
Product data:

Product Type:	Primary Antibodies
Applications:	IHC, WB
Recommended Dilution:	WB, IHC
Reactivity:	Human
Host:	Rabbit
Isotype:	IgG
Clonality:	Polyclonal
Immunogen:	The immunogen for anti-DBP antibody: synthetic peptide directed towards the middle region of human DBP. Synthetic peptide located within the following region: SSPGHAPARAALGTASGHRAGLTSRDTPSPVDPDTVEVLMTFEPDPADLA
Formulation:	Liquid. Purified antibody supplied in 1x PBS buffer with 0.09% (w/v) sodium azide and 2% sucrose. <i>Note that this product is shipped as lyophilized powder to China customers.</i>
Conjugation:	Unconjugated
Storage:	Store at -20°C as received.
Stability:	Stable for 12 months from date of receipt.
Predicted Protein Size:	34 kDa
Gene Name:	D-box binding PAR bZIP transcription factor
Database Link:	NP_001343 Entrez Gene 1628 Human Q10586
Background:	DBP is a member of the PAR bZIP (proline and acidic amino acid-rich basic leucine zipper) transcription factor family (Khatib et al., 1994).
Synonyms:	DABP
Note:	Immunogen sequence homology: Dog: 100%; Pig: 100%; Rat: 100%; Horse: 100%; Human: 100%; Mouse: 100%; Sheep: 100%; Bovine: 100%
Protein Families:	Transcription Factors

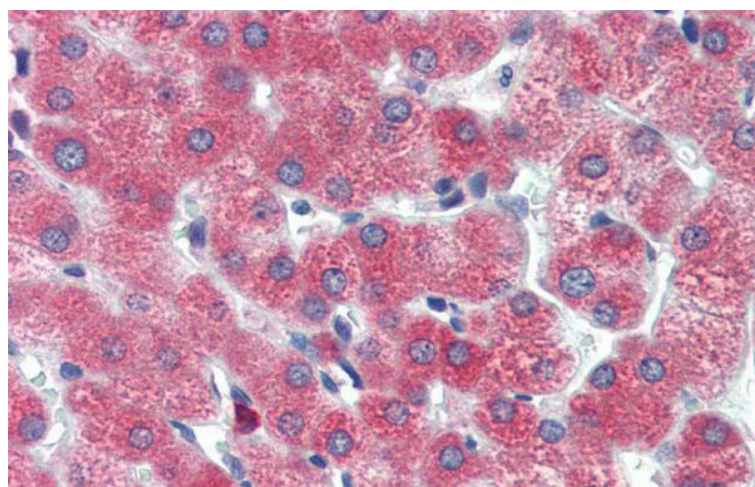


[View online »](#)

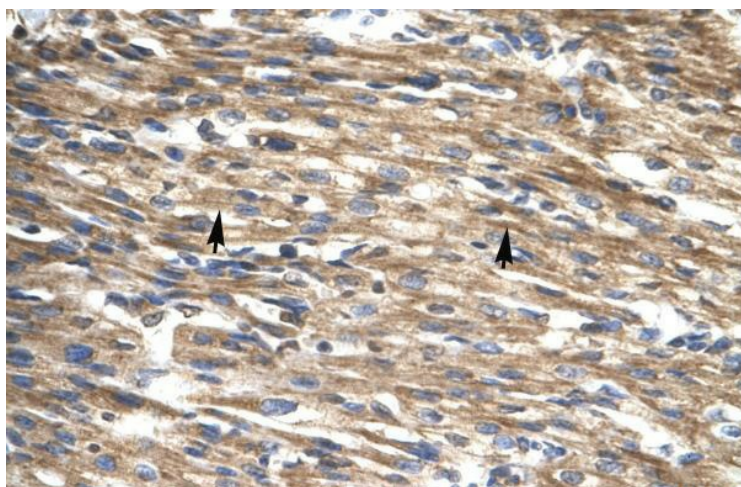
Product images:



WB Suggested Anti-DBP Antibody Titration: 0.2-1 ug/ml; ELISA Titer: 1:1562500; Positive Control: HepG2 cell lysate



Immunohistochemistry with Human Liver cell lysate tissue at an antibody concentration of 5.0ug/ml using anti-DBP antibody



Human Heart