

Product datasheet for **TA329342**

ZNF475 (ZFP1) Rabbit Polyclonal Antibody

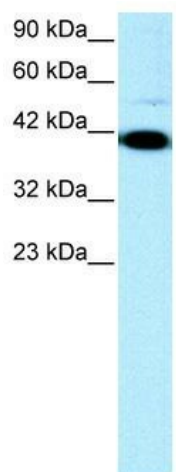
Product data:

Product Type:	Primary Antibodies
Applications:	IHC, WB
Recommended Dilution:	WB, IHC
Reactivity:	Human
Host:	Rabbit
Isotype:	IgG
Clonality:	Polyclonal
Immunogen:	The immunogen for anti-ZFP1 antibody: synthetic peptide directed towards the N terminal of human ZFP1. Synthetic peptide located within the following region: SNRSYAGKQTDECNEFGKALLYLKQEKTHSGVEYSEYNKSGKALSHKAAI
Formulation:	Liquid. Purified antibody supplied in 1x PBS buffer with 0.09% (w/v) sodium azide and 2% sucrose.
Conjugation:	Unconjugated
Storage:	Store at -20°C as received.
Stability:	Stable for 12 months from date of receipt.
Predicted Protein Size:	41 kDa
Gene Name:	ZFP1 zinc finger protein
Database Link:	NP_710155 Entrez Gene 162239 Human Q6P2D0
Background:	Zinc finger proteins (Zfp) are encoded by a large family of genes present in many organisms including yeast and human. Some of them are transcriptional activators and bind specifically to DNA by zinc mediated folded structures commonly known as zinc fingers. The putative Zfp-1 (Zinc finger protein 1 homolog) protein contains in addition to 7 zinc fingers, two helix-turn-helix motifs.
Synonyms:	ZNF475
Note:	Immunogen sequence homology: Human: 100%; Bovine: 92%; Dog: 86%; Rat: 86%; Mouse: 79%

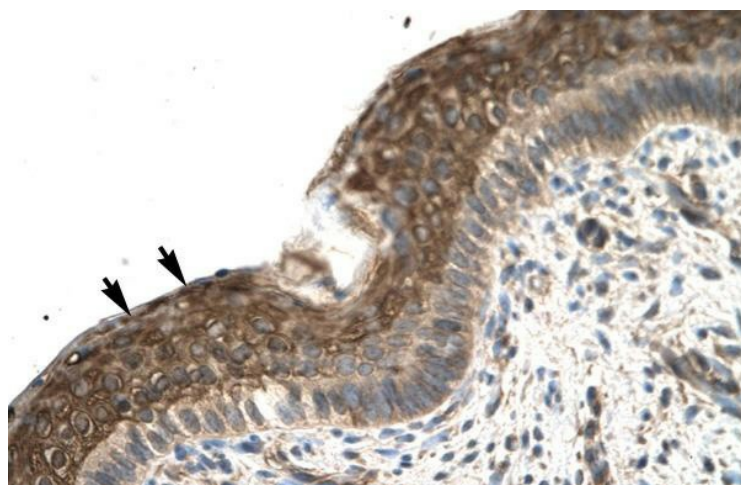

[View online »](#)

Protein Families: Transcription Factors

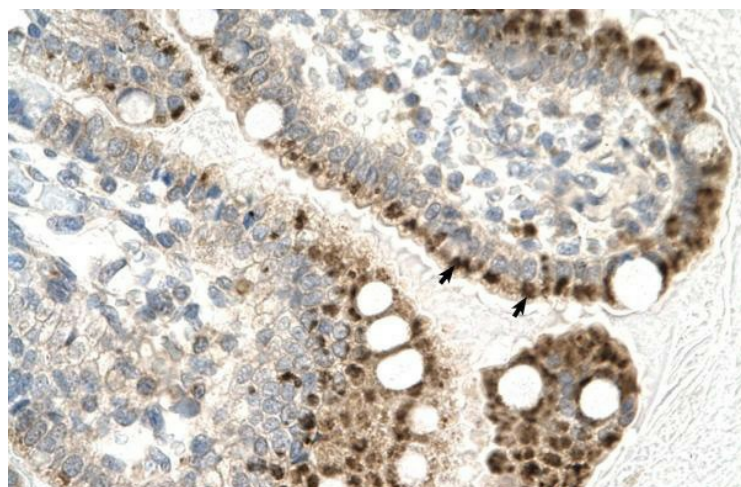
Product images:



WB Suggested Anti-ZFP1 Antibody Titration: 0.2-1 ug/ml; ELISA Titer: 1:312500; Positive Control: Jurkat cell lysate



Rabbit Anti-ZFP1 Antibody; Paraffin Embedded Tissue: Human Spermatophore; Cellular Data: Epithelial cells; Antibody Concentration: 4.0-8.0 ug/ml; Magnification: 400X



Rabbit Anti-ZFP1 Antibody; Paraffin Embedded Tissue: Human Intestine; Cellular Data: Epithelial cells of intestinal villas; Antibody Concentration: 4.0-8.0 ug/ml; Magnification: 400X