

Product datasheet for **TA329341**

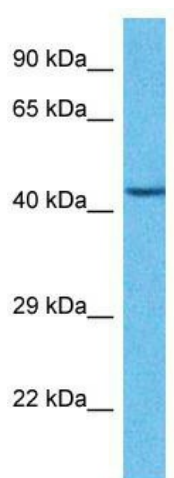
IRX2 Rabbit Polyclonal Antibody

Product data:

Product Type:	Primary Antibodies
Applications:	WB
Recommended Dilution:	WB
Reactivity:	Human
Host:	Rabbit
Clonality:	Polyclonal
Immunogen:	The immunogen for Anti-IRX2 antibody is: synthetic peptide directed towards the middle region of Human IRX2. Synthetic peptide located within the following region: EDEDEDEGDATRSKDESPDKAQEGTETSAEDEGISLHVDSLTDHSCSAES
Formulation:	Liquid. Purified antibody supplied in 1x PBS buffer with 0.09% (w/v) sodium azide and 2% sucrose. <i>Note that this product is shipped as lyophilized powder to China customers.</i>
Conjugation:	Unconjugated
Storage:	Store at -20°C as received.
Stability:	Stable for 12 months from date of receipt.
Predicted Protein Size:	49 kDa
Gene Name:	iroquois homeobox 2
Database Link:	NP_150366 Entrez Gene 153572 Human Q9BZ11
Background:	IRX2 is a member of the Iroquois homeobox gene family. Members of this family appear to play multiple roles during pattern formation of vertebrate embryos.
Synonyms:	IRXA2
Note:	Immunogen sequence homology: Dog: 100%; Human: 100%; Horse: 93%; Rabbit: 93%; Pig: 86%; Guinea pig: 86%; Rat: 79%; Mouse: 79%
Protein Families:	Transcription Factors



[View online »](#)

Product images:

Host: Rabbit; Target Name: IRX2; Sample Tissue: Esophagus Tumor lysates; Antibody Dilution: 1.0ug/ml