

Product datasheet for **TA329340**

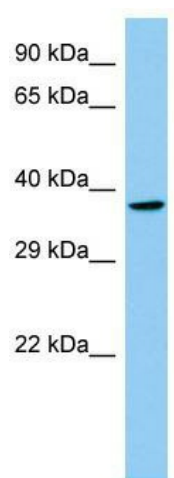
Lhx8 Rabbit Polyclonal Antibody

Product data:

Product Type:	Primary Antibodies
Applications:	WB
Recommended Dilution:	WB
Reactivity:	Rat
Host:	Rabbit
Isotype:	IgG
Clonality:	Polyclonal
Immunogen:	The immunogen for Anti-Lhx8 antibody is: synthetic peptide directed towards the N-terminal region of Rat Lhx8. Synthetic peptide located within the following region: MSEECGRPAALAAGRTRKGAGEEGLVNPEGAGDEDESCSSSAPLSPSSSPQ
Formulation:	Liquid. Purified antibody supplied in 1x PBS buffer with 0.09% (w/v) sodium azide and 2% sucrose. <i>Note that this product is shipped as lyophilized powder to China customers.</i>
Conjugation:	Unconjugated
Storage:	Store at -20°C as received.
Stability:	Stable for 12 months from date of receipt.
Predicted Protein Size:	36 kDa
Gene Name:	LIM homeobox 8
Database Link:	NP_001012219 Entrez Gene 365963 Rat
Background:	Lhx8 may play a role in development of the cholinergic system.
Synonyms:	Lhx7
Note:	Immunogen sequence homology: Dog: 100%; Pig: 100%; Rat: 100%; Human: 100%; Rabbit: 100%; Guinea pig: 100%; Mouse: 93%; Bovine: 93%



[View online »](#)

Product images:

Host: Rabbit; Target Name: Lhx8; Sample Tissue: Rat Thymus lysates; Antibody Dilution: 1.0ug/ml