

## Product datasheet for **TA329338**

### ZFP90 Rabbit Polyclonal Antibody

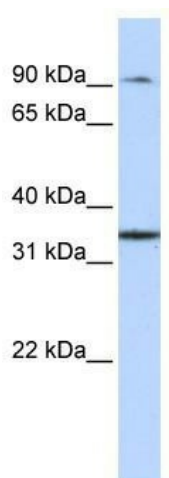
#### Product data:

Product Type:	Primary Antibodies
Applications:	WB
Recommended Dilution:	WB
Reactivity:	Human
Host:	Rabbit
Isotype:	IgG
Clonality:	Polyclonal
Immunogen:	The immunogen for anti-ZFP90 antibody: synthetic peptide directed towards the middle region of human ZFP90. Synthetic peptide located within the following region: QEECGGAQSLGNCDQVLRGYQVSKPEVIFKLEQGEEPWISEGEIQRPFYP
Formulation:	Liquid. Purified antibody supplied in 1x PBS buffer with 0.09% (w/v) sodium azide and 2% sucrose.
Conjugation:	Unconjugated
Storage:	Store at -20°C as received.
Stability:	Stable for 12 months from date of receipt.
Predicted Protein Size:	90 kDa
Gene Name:	ZFP90 zinc finger protein
Database Link:	<a href="#">NP_597715</a> <a href="#">Entrez Gene 146198 Human</a> <a href="#">Q8TF47</a>
Background:	ZFP90 may function as a repressor or silencer protein, and most likely exerts its repressing activity upon zinc-dependent binding to DNA. It may be involved in proper spermatogenesis by repressing the expression of genes unnecessary or incompatible with the maintenance of a haploid cell state.
Synonyms:	FIK; NK10; zfp-90; ZNF756



[View online »](#)

## Product images:



WB Suggested Anti-ZFP90 Antibody Titration: 0.2-1 ug/ml; ELISA Titer: 1:1562500; Positive Control: Human Liver