

## Product datasheet for **TA329337**

### SLC34A3 Rabbit Polyclonal Antibody

#### Product data:

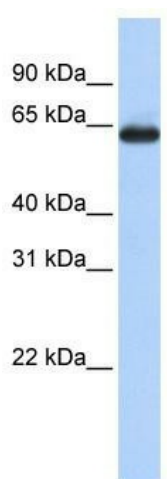
Product Type:	Primary Antibodies
Applications:	WB
Recommended Dilution:	WB
Reactivity:	Human
Host:	Rabbit
Isotype:	IgG
Clonality:	Polyclonal
Immunogen:	The immunogen for anti-SLC34A3 antibody: synthetic peptide directed towards the middle region of human SLC34A3. Synthetic peptide located within the following region: GDRDEFQRAFSGSAVHGIFNWLTVLVLLPLESATALLERLSELALGAASL
Formulation:	Liquid. Purified antibody supplied in 1x PBS buffer with 0.09% (w/v) sodium azide and 2% sucrose.
Conjugation:	Unconjugated
Storage:	Store at -20°C as received.
Stability:	Stable for 12 months from date of receipt.
Predicted Protein Size:	63 kDa
Gene Name:	solute carrier family 34 member 3
Database Link:	<a href="#">NP_543153</a> <a href="#">Entrez Gene 142680 Human</a> <a href="#">Q8N130</a>
Background:	SLC34A3 contributes to the maintenance of inorganic phosphate (Pi) concentration at the kidney.SLC34A3 contributes to the maintenance of inorganic phosphate (Pi) concentration at the kidney (Segawa et al., 2002 [PubMed 11880379]). [supplied by OMIM]. PRIMARYREFSEQ_SPAN PRIMARY_IDENTIFIER PRIMARY_SPAN COMP 1-942 AK095999.1 1-942 943-2142 AB055000.1 827-2026
Synonyms:	HHRH; NPTIIc
Note:	Immunogen sequence homology: Human: 100%; Mouse: 100%; Pig: 93%; Rat: 93%; Guinea pig: 93%; Dog: 86%; Horse: 86%; Bovine: 86%



[View online »](#)

Protein Families: Transmembrane

### Product images:



WB Suggested Anti-SLC34A3 Antibody Titration:  
0.2-1 ug/ml; ELISA Titer: 1:312500; Positive  
Control: Human Lung