

## Product datasheet for **TA329336**

### CMTM2 Rabbit Polyclonal Antibody

#### Product data:

Product Type:	Primary Antibodies
Applications:	WB
Recommended Dilution:	WB
Reactivity:	Human
Host:	Rabbit
Isotype:	IgG
Clonality:	Polyclonal
Immunogen:	The immunogen for anti-CMTM2 antibody: synthetic peptide directed towards the N terminal of human CMTM2. Synthetic peptide located within the following region: DKPQKAVQDHKEPSDKPQKAVQPKHEVGTTRRGRRYRWELKDSNKEFWLL
Formulation:	Liquid. Purified antibody supplied in 1x PBS buffer with 0.09% (w/v) sodium azide and 2% sucrose. <i>Note that this product is shipped as lyophilized powder to China customers.</i>
Conjugation:	Unconjugated
Storage:	Store at -20°C as received.
Stability:	Stable for 12 months from date of receipt.
Predicted Protein Size:	27 kDa
Gene Name:	CKLF like MARVEL transmembrane domain containing 2
Database Link:	<a href="#">NP_653274</a> <a href="#">Entrez Gene 146225 Human</a> <a href="#">Q8TAZ6</a>
Background:	CMTM2 belongs to the chemokine-like factor superfamily, a novel family that links the chemokine and the transmembrane 4 superfamilies of signaling molecules. The protein may play an important role in testicular development. This gene belongs to the chemokine-like factor gene superfamily, a novel family that links the chemokine and the transmembrane 4 superfamilies of signaling molecules. The protein encoded by this gene may play an important role in testicular development.
Synonyms:	CKLFSF2

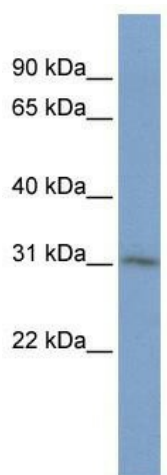


[View online »](#)

**Note:** Immunogen sequence homology: Rat: 100%; Human: 100%; Rabbit: 100%; Horse: 93%; Dog: 87%; Bovine: 87%; Mouse: 79%

**Protein Families:** Transmembrane

**Product images:**



WB Suggested Anti-CMTM2 Antibody Titration:  
0.2-1 ug/ml; ELISA Titer: 1:62500; Positive Control:  
Human Placenta