

Product datasheet for **TA329335**

ATF6 beta (ATF6B) Rabbit Polyclonal Antibody

Product data:

| | |
|-------------------------|---|
| Product Type: | Primary Antibodies |
| Applications: | WB |
| Recommended Dilution: | WB |
| Reactivity: | Human |
| Host: | Rabbit |
| Isotype: | IgG |
| Clonality: | Polyclonal |
| Immunogen: | The immunogen for anti-CREBL1 antibody: synthetic peptide directed towards the middle region of human CREBL1. Synthetic peptide located within the following region: FNRTESLRLADELSGWVQRHQRGRRKIPQRAQERQKSQPRKKSPVKAVP |
| Formulation: | Liquid. Purified antibody supplied in 1x PBS buffer with 0.09% (w/v) sodium azide and 2% sucrose. <i>Note that this product is shipped as lyophilized powder to China customers.</i> |
| Conjugation: | Unconjugated |
| Storage: | Store at -20°C as received. |
| Stability: | Stable for 12 months from date of receipt. |
| Predicted Protein Size: | 77 kDa |
| Gene Name: | activating transcription factor 6 beta |
| Database Link: | NP_004372 Entrez Gene 1388 Human Q99941 |



[View online »](#)

Background:

ATF6B(CREBL1) is a transcription factor in the unfolded protein response (UPR) pathway during ER stress. Either as a homodimer or as a heterodimer with ATF6-alpha, the protein binds to the ER stress response element, interacting with nuclear transcription factor Y to activate UPR target genes. ATF6B is normally found in the membrane of the endoplasmic reticulum; however, under ER stress, the N-terminal cytoplasmic domain is cleaved from the rest of the protein and translocates to the nucleus. Two transcript variants encoding different isoforms have been found for this gene. The protein encoded by this gene bears sequence similarity with the Creb/ATF subfamily of the bZip superfamily of transcription factors. It localizes to both the cytoplasm and the nucleus. The gene localizes to the major histocompatibility complex (MHC) class III region on chromosome 6. Publication Note: This RefSeq record includes a subset of the publications that are available for this gene. Please see the Entrez Gene record to access additional publications.

Synonyms:

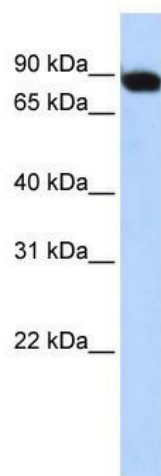
CREB-RP; CREBL1; G13

Note:

Immunogen sequence homology: Human: 100%; Dog: 93%; Horse: 93%; Rat: 86%; Mouse: 86%; Bovine: 86%; Pig: 85%

Protein Families:

Transcription Factors

Product images:

WB Suggested Anti-CREBL1 Antibody Titration:
0.2-1 ug/ml; ELISA Titer: 1:1562500; Positive
Control: Human Muscle