

## Product datasheet for **TA329331**

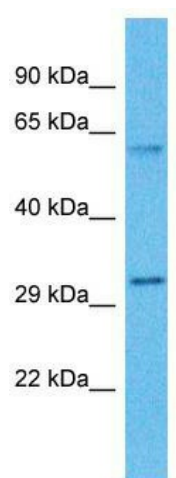
### ZDHHC19 Rabbit Polyclonal Antibody

#### Product data:

Product Type:	Primary Antibodies
Applications:	WB
Recommended Dilution:	WB
Reactivity:	Human
Host:	Rabbit
Clonality:	Polyclonal
Immunogen:	The immunogen for Anti-ZDHHC19 antibody is: synthetic peptide directed towards the N-terminal region of Human ZDHHC19. Synthetic peptide located within the following region: FPCRWLAQNGEWAFPVITGSLFVLTFVSLVSLNFSDPGILHQGSAEQGPL
Formulation:	Liquid. Purified antibody supplied in 1x PBS buffer with 0.09% (w/v) sodium azide and 2% sucrose.
Conjugation:	Unconjugated
Storage:	Store at -20°C as received.
Stability:	Stable for 12 months from date of receipt.
Predicted Protein Size:	34 kDa
Gene Name:	zinc finger DHHC-type containing 19
Database Link:	<a href="#">NP_001034706</a> <a href="#">Entrez Gene 131540 Human</a> <a href="#">Q8WVZ1</a>
Background:	ZDHHC19 belongs to the DHHC palmitoyltransferase family. It contains 1 DHHC-type zinc finger. ZDHHC19 is a multi-pass membrane protein. The function of the ZDHHC19 protein is not known.
Synonyms:	DHHC19
Note:	Immunogen sequence homology: Human: 100%; Dog: 93%; Bovine: 93%; Horse: 92%; Rat: 91%; Mouse: 91%; Pig: 86%
Protein Families:	Transmembrane



[View online »](#)

**Product images:**

Host: Rabbit; Target Name: ZDHHC19; Sample  
Tissue: Lypho Node Tumor lysates; Antibody  
Dilution: 1.0ug/ml