

Product datasheet for TA329329

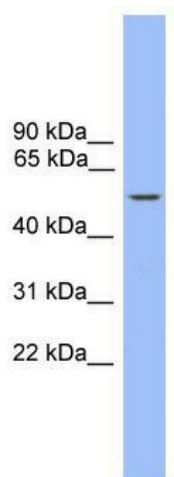
ZBTB8B Rabbit Polyclonal Antibody

Product data:

Product Type:	Primary Antibodies
Applications:	WB
Recommended Dilution:	WB
Reactivity:	Human
Host:	Rabbit
Isotype:	IgG
Clonality:	Polyclonal
Immunogen:	The immunogen for anti-ZBTB8 antibody: synthetic peptide directed towards the c terminal of human ZBTB8. Synthetic peptide located within the following region: LSQGLRRFGLCDSTCVTDTPDDDDDLMPINLSLVEASSESEKSDTDND
Formulation:	Liquid. Purified antibody supplied in 1x PBS buffer with 0.09% (w/v) sodium azide and 2% sucrose. <i>Note that this product is shipped as lyophilized powder to China customers.</i>
Conjugation:	Unconjugated
Storage:	Store at -20°C as received.
Stability:	Stable for 12 months from date of receipt.
Predicted Protein Size:	54 kDa
Gene Name:	zinc finger and BTB domain containing 8B
Database Link:	NP_001139192 Entrez Gene 728116 Human Q8NAP8
Background:	ZBTB8 may be involved in transcriptional regulation.
Synonyms:	ZNF916B
Note:	Immunogen sequence homology: Dog: 100%; Pig: 100%; Rat: 100%; Human: 100%; Guinea pig: 100%; Horse: 93%; Mouse: 93%; Rabbit: 86%



[View online »](#)

Product images:

WB Suggested Anti-ZBTB8 Antibody Titration: 0.2-1 ug/ml; Positive Control: THP-1 cell lysate